

THE FIRST PART

RJ45+TRANSFORMER SERIES



基本参数

电气性能:

1. 额定电流:1.5AMPS
2. 额定电压:125VAC
3. 绝缘电阻:>500MΩ
4. 耐压强度:AC 1000V 50HZ或60HZ 1分钟
5. 接触电阻:<20MΩ

机械性能:

1. 插入力:2条金丝=350g /4条金丝=500g/ 6条金丝=750g/ 8条金丝=900g /10条金丝=1050g
2. 配合强度:插头和插座之间7.7Kg
3. 使用寿命:>750次插拔

材 料:

1. 塑壳:ABS RESIN(UL94V-0) /PBT(UL94V-0) /PA46(UL94V-0)/ PA66(UL94V-0) /LCP(UL94V-0)
2. 镀金丝:直径0.45mm磷铜丝镀镍后镀金/0.35厚磷铜片镀镍后选镀金
3. 屏蔽壳:0.2-0.25mm厚的铜合金表面镀镍
4. 可选镀金层厚度:1u inch / 3u inch / 6u inch / 15u inch / 30u inch / 50u inch
5. 工作环境温度:-40℃ -70℃

Electrical

- 1,Current Rating:1.5AMPS
- 2,Voltage Rating:125VAC
- 3,Insulation Resistance:500 MΩ mini
- 4,Withstand Voltage:AC 1000V RMS 50HZ or 60HZ 1min
- 5,Contact Resistance:<20 MΩ MAX

Mechanical

1. Insertion Force: 2 Contacts=350g / 4 Contacts=500g / 6 Contacts=750g / 8 Contacts=900g / 10 Contacts=1050g
2. Retention Strength:7.7kg Between Jack And Plug
3. Durability:>750 Mating Cycles Mini

Material

1. Housing: ABS RESIN(UL94V-0) / PBT(UL94V-0) / PA46(UL94V-0)/ PA66(UL94V-0) / LCP(UL94V-0)
2. Spring Wire: 0.45mm Dia Phosphor Bronze Gold Plating Over Nickel / 0.35mm Thickness Phosphor Bronze Alloy Selective Gold Plating Over Nickel.
3. Shielding:0.2-0.35mm Thickness Copper Alloy With Nickel Plated
4. Gold Plating:1u inch, 3u inch,6u inch, 15u inch,30u inch,50u inch
5. Working Temperature:-40℃-70℃

编码原则

THYX
1 2 3 4 5 6 7

(1)代表产品机构类型

1	TAB DOWM 21.5MM
2	TAB UP 21.5MM
3	TAB UP 25.4MM
4	TAB UP 33.0MM
5	180度直插型
6	RJ45+1USB
7	RJ45+2USB

(3) 代表产品线路接脚类型:

(4) 代表产品封装类型:

A	带灯无弹 平齐脚 (所有机构/1类4.06MM)
B	带灯无弹 平齐脚 (所有机构4.90MM)
C	带灯无弹 前后脚 (所有机构)
D	带灯带弹 平齐脚 (所有机构/1类4.06MM)
E	带灯带弹 平齐脚 (1类机构4.90MM)
F	带灯带弹 前后脚 (所有机构)
G	无灯无弹 (所有机构)
H	无灯带弹 (所有机构)
I	无灯全塑 (所有机构)
J	带灯全塑 平齐脚 (所有机构)
K	带灯全塑 前后脚 (所有机构)

(6)代表产品塑胶脚与材料

A1	十字脚PBT (黑色)
A2	十字脚PA66 (黑色)
A3	十字脚PA46 (黑色)
A4	大香菇脚PBT (黑色)
A4-1	小香菇脚PBT (黑色)
A5	香菇脚PA66 (黑色)
A6	香菇脚PA46 (黑色)
A7	香菇脚LCP (黑色)
A8	半边脚PBT (黑色)
A9	PBT (黑色)
B1	十字脚PBT (黄色)
B2	十字脚PA66 (黄色)
B3	十字脚PA46 (黄色)
B4	香菇脚PBT (黄色)
B5	香菇脚PA66 (黄色)
B6	香菇脚PA46 (黄色)
C1	十字脚PBT (白色)
C2	十字脚PA66 (白色)
C3	十字脚PA46 (白色)
C4	香菇脚PBT (白色)
C5	香菇脚PA66 (白色)
C6	香菇脚PA46 (白色)
D1	十字脚PBT (蓝色)
D2	十字脚PA66 (蓝色)
D3	十字脚PA46 (蓝色)
D4	香菇脚PBT (蓝色)
D5	香菇脚PA66 (蓝色)
D6	香菇脚PA46 (蓝色)

(2) 代表产品通道类型:

11	RJ45 1*1
12	RJ45 1*2
14	RJ45 1*4
16	RJ45 1*6
18	RJ45 1*8
21	RJ45 2*1
22	RJ45 2*2
24	RJ45 2*4
26	RJ45 2*6
28	RJ45 2*8

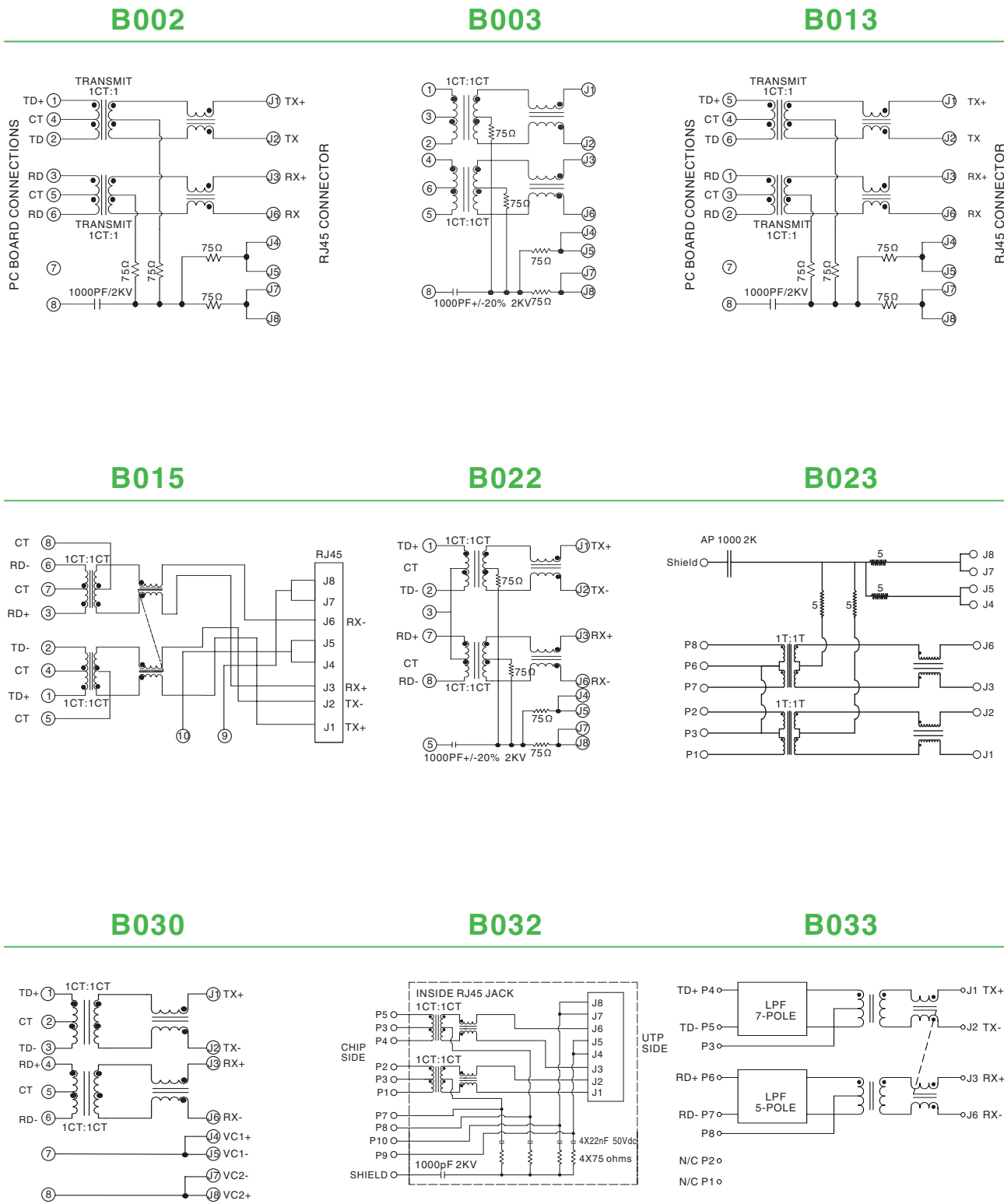
(5) 代表LED类型

LED CODE	LED COLOR		LED POLARITY	
	LEFT	RIGHT	LEFT	RIGHT
A1	Y	G		
A2	G	Y		
A3	G	G		
B1	Y	G		
B2	G	Y		
B3	G	G		
C1	Y	G		
C2	G	Y		
C3	G	G		
D1	Y	G		
D2	G	Y		
D3	G	G		
E1	Y	G/Y		
E2	Y	Y/G		
E3	G	G/Y		
E4	G	Y/G		
F1	G/Y	Y		
F2	Y/G	Y		
F3	G/Y	G		
F4	Y/G	G		
G1	G/Y	G/Y		
G2	G/Y	Y/G		
G3	Y/G	G/Y		
G4	Y/G	Y/G		
W	NO	NO	NO	NO

(7)PCB封装类型

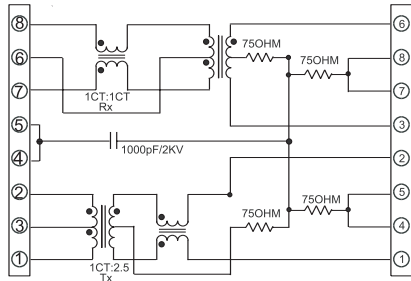
D	直插卧式
S	SMD

RJ45+TRANSFORMER 100BASE线路图

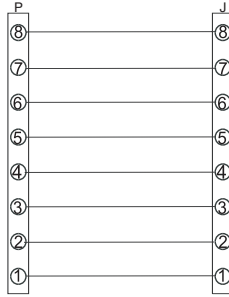


RJ45+TRANSFORMER 100BASE线路图

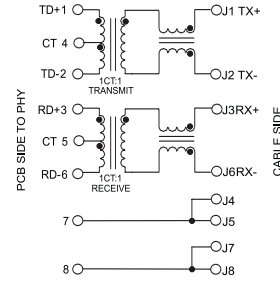
B034



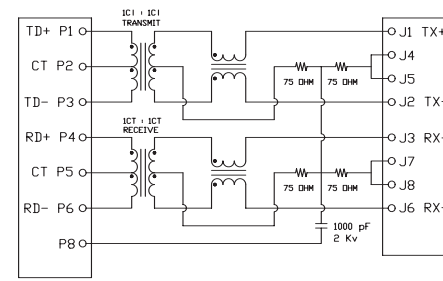
B035



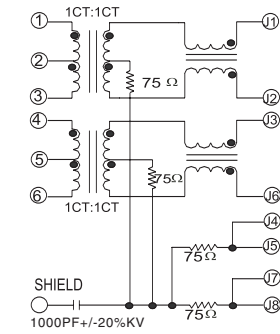
B049



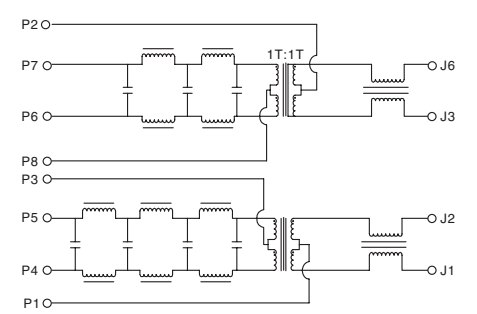
B083



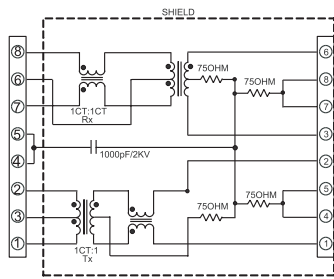
B085



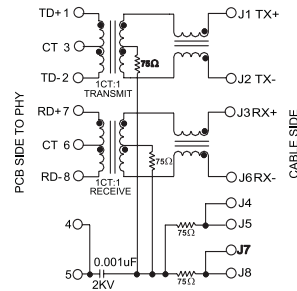
B086



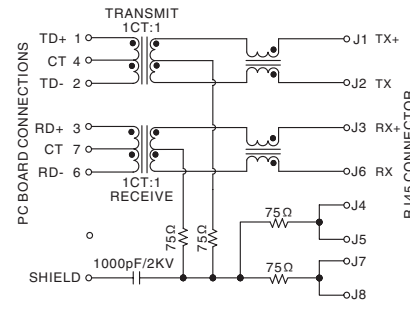
B051



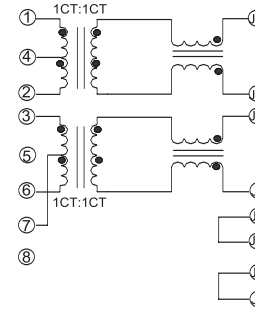
B075



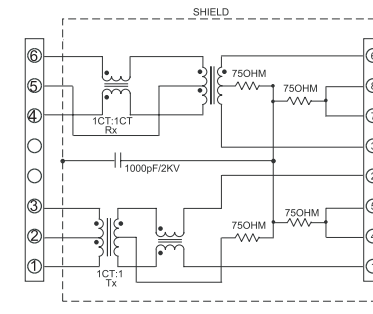
B076



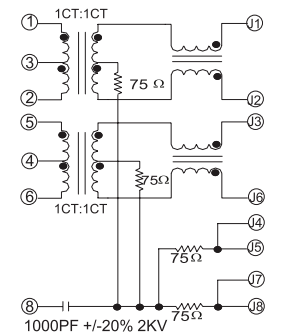
B087



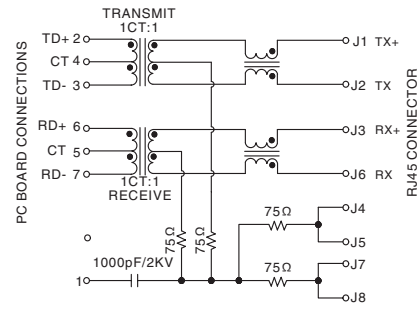
B088



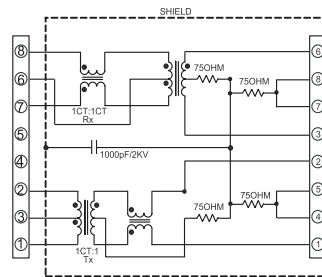
B093



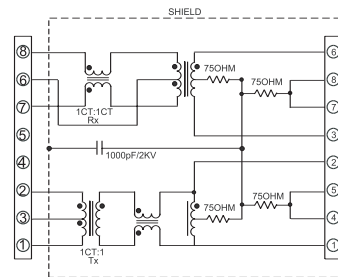
B078



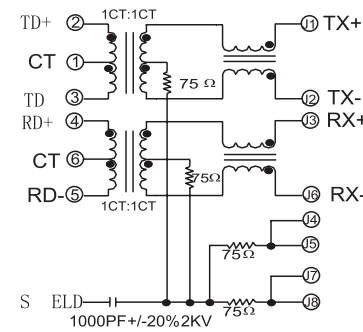
B081



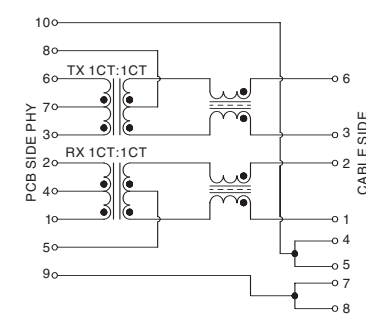
B082



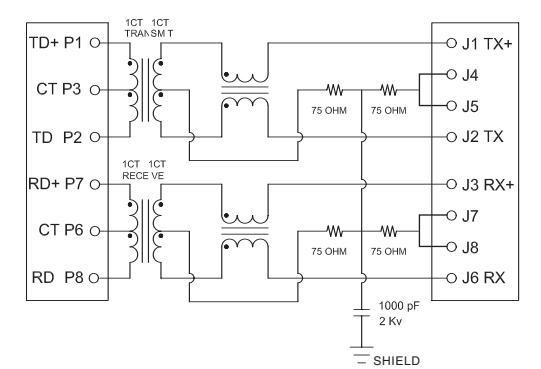
B100



B108

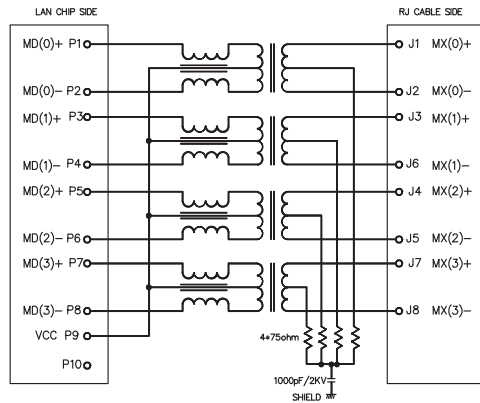


B113

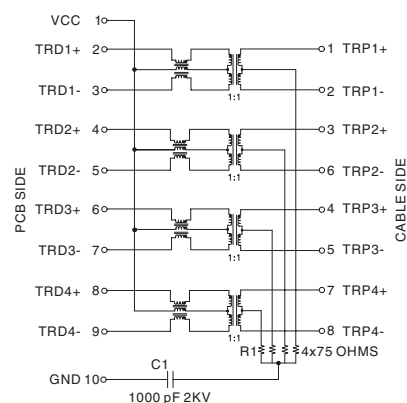


RJ45+TRANSFORMER 1000BASE线路图

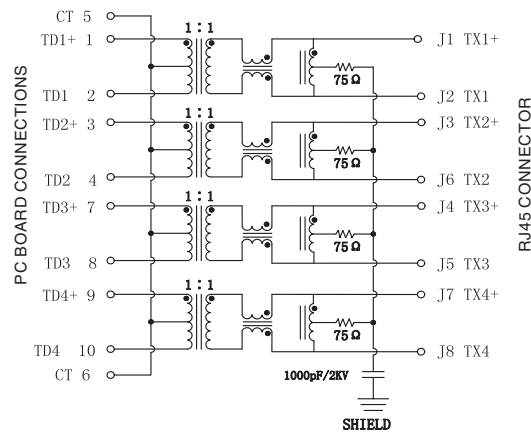
Q001



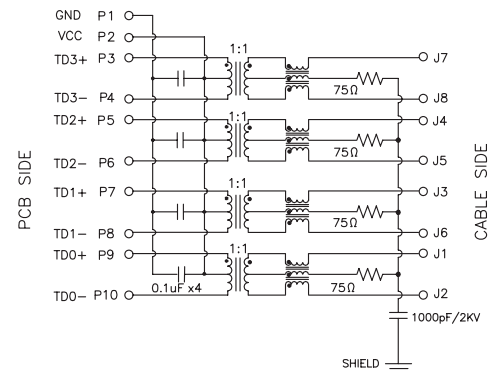
Q003



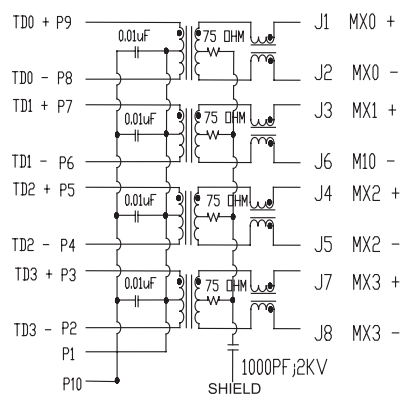
Q011



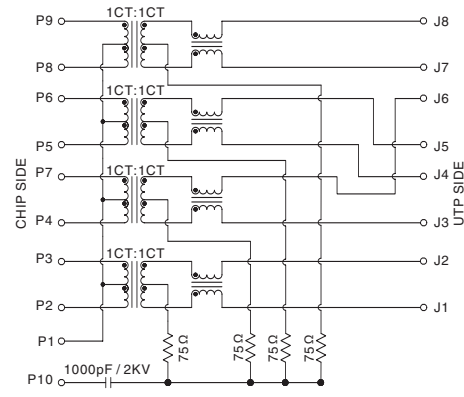
Q054



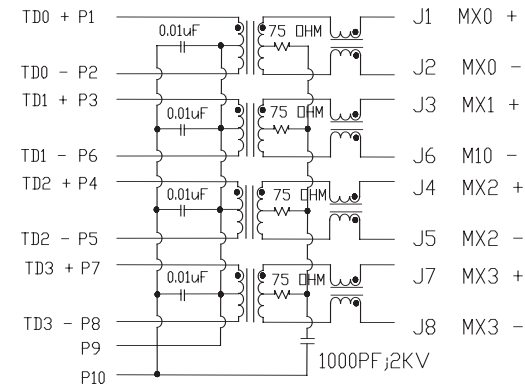
Q061



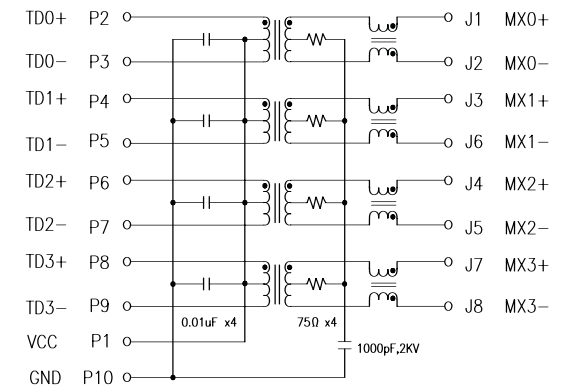
Q066



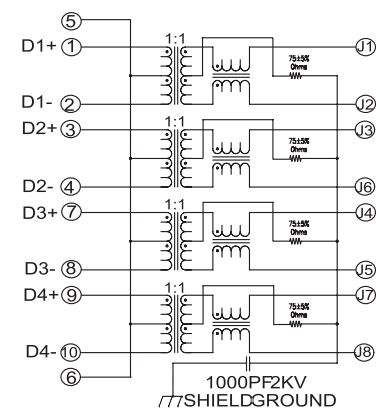
Q068



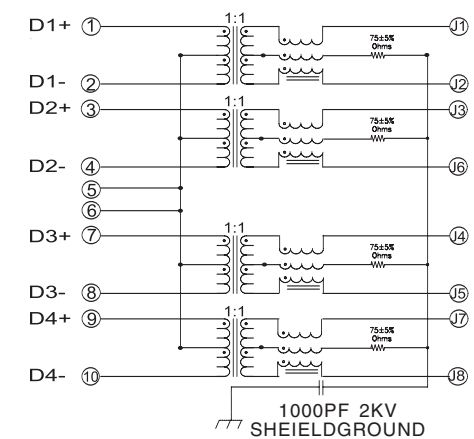
Q069



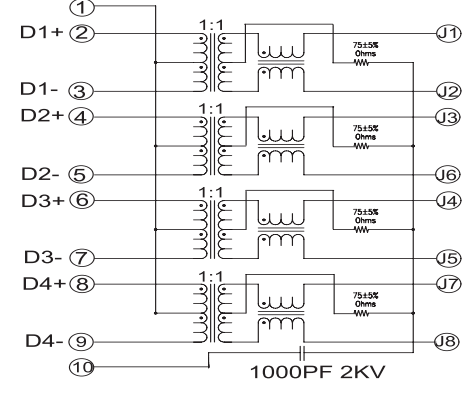
Q070



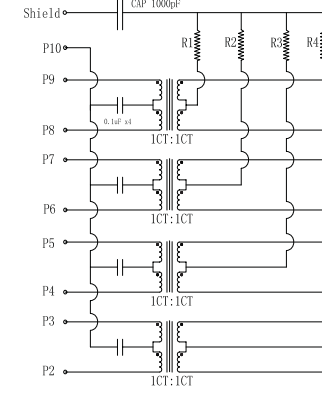
Q072



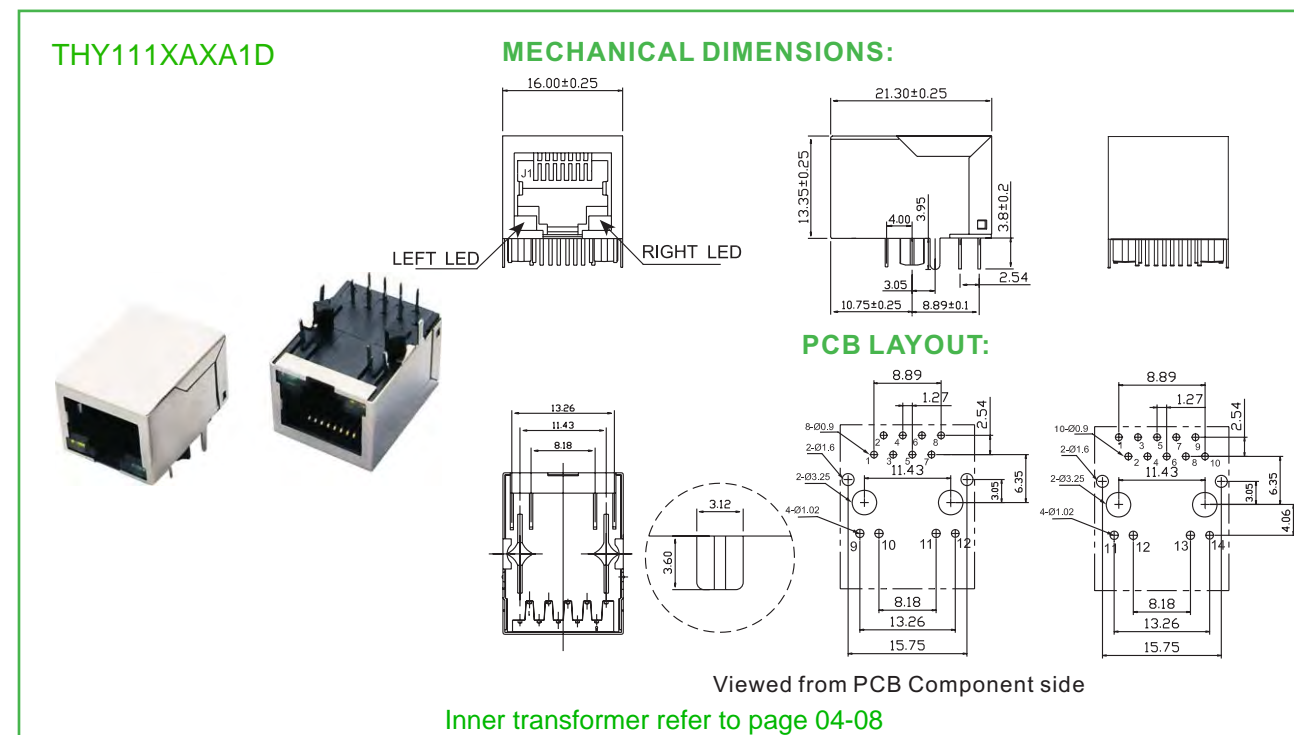
Q106



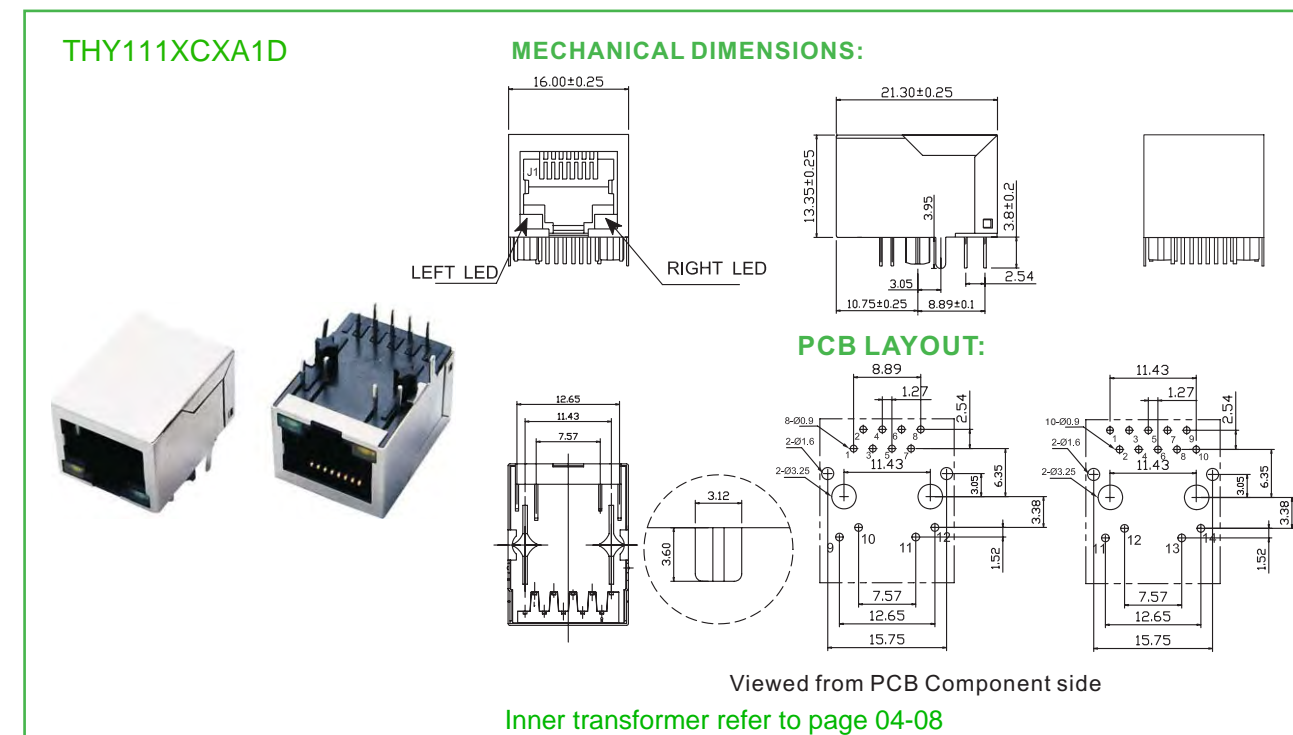
Q107



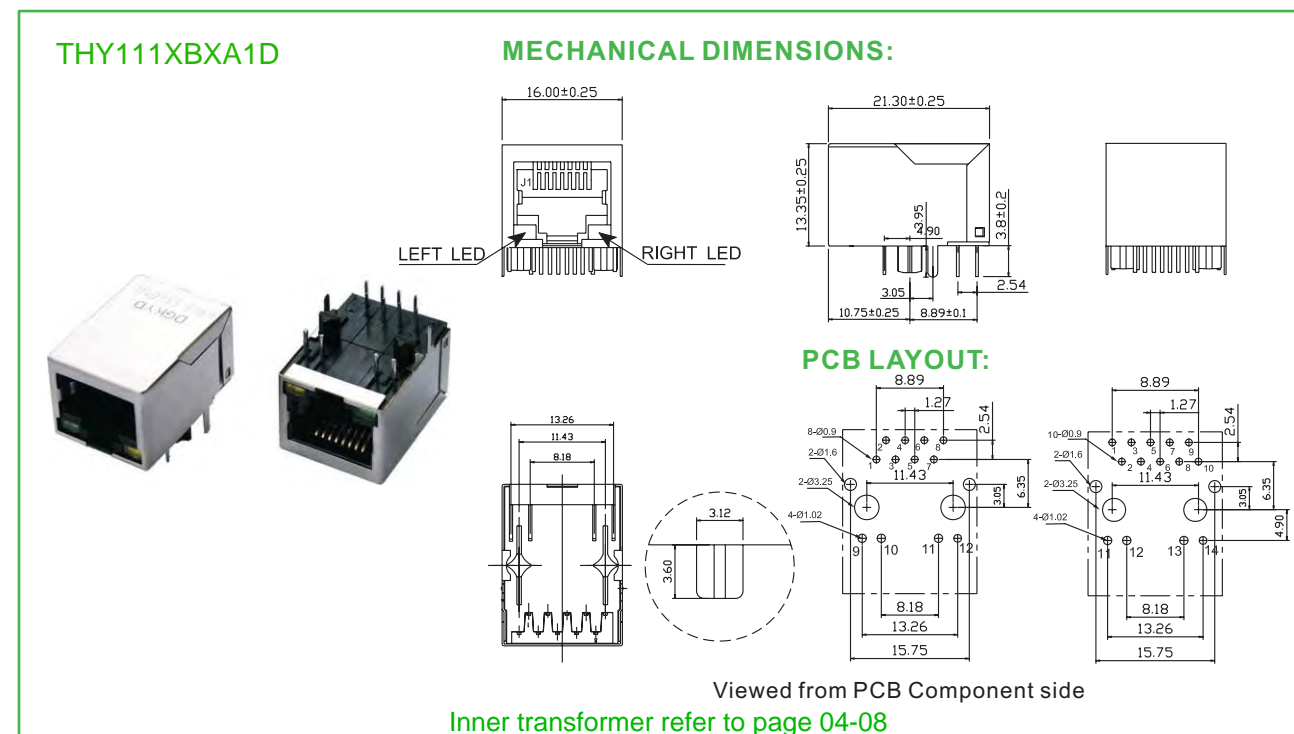
RJ45 TRANSFORMER 1x1 PORT TAP DOWN DIP 90 °



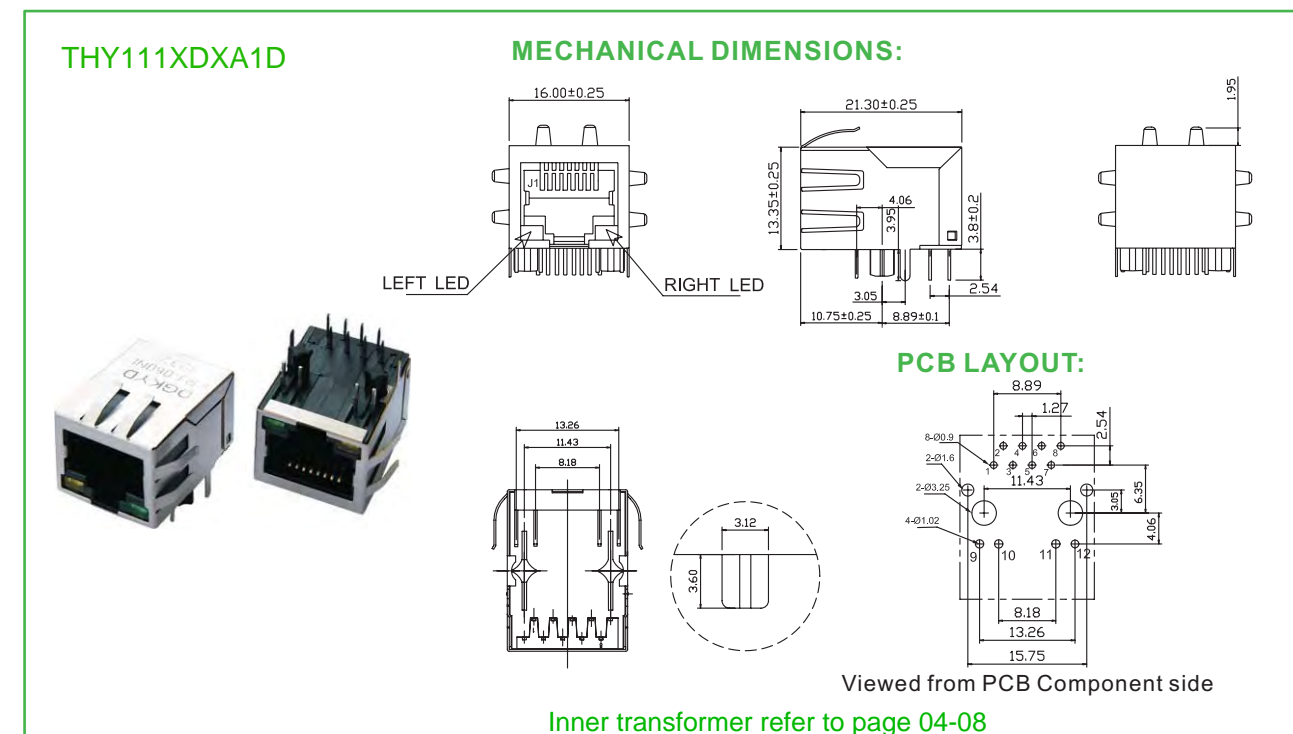
RJ45 TRANSFORMER 1x1 PORT TAP DOWN DIP 90 °



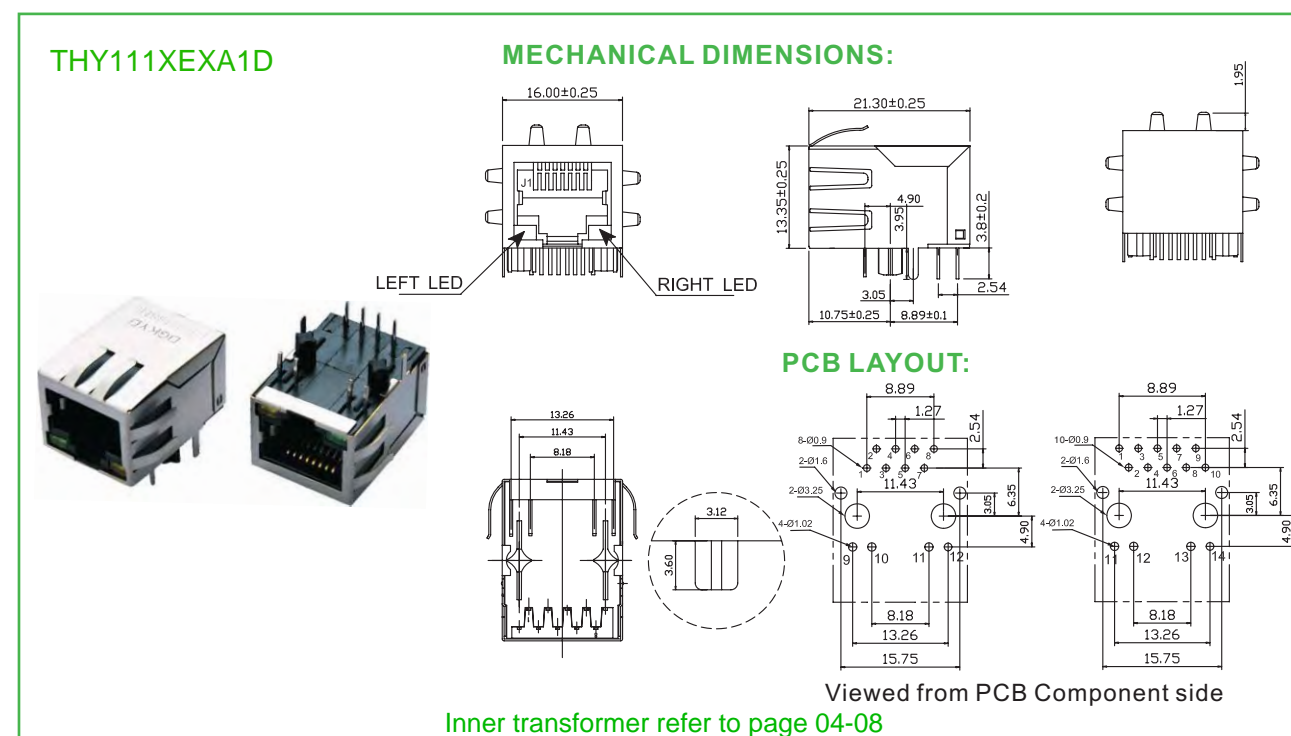
RJ45 TRANSFORMER 1x1 PORT TAP DOWN DIP 90 °



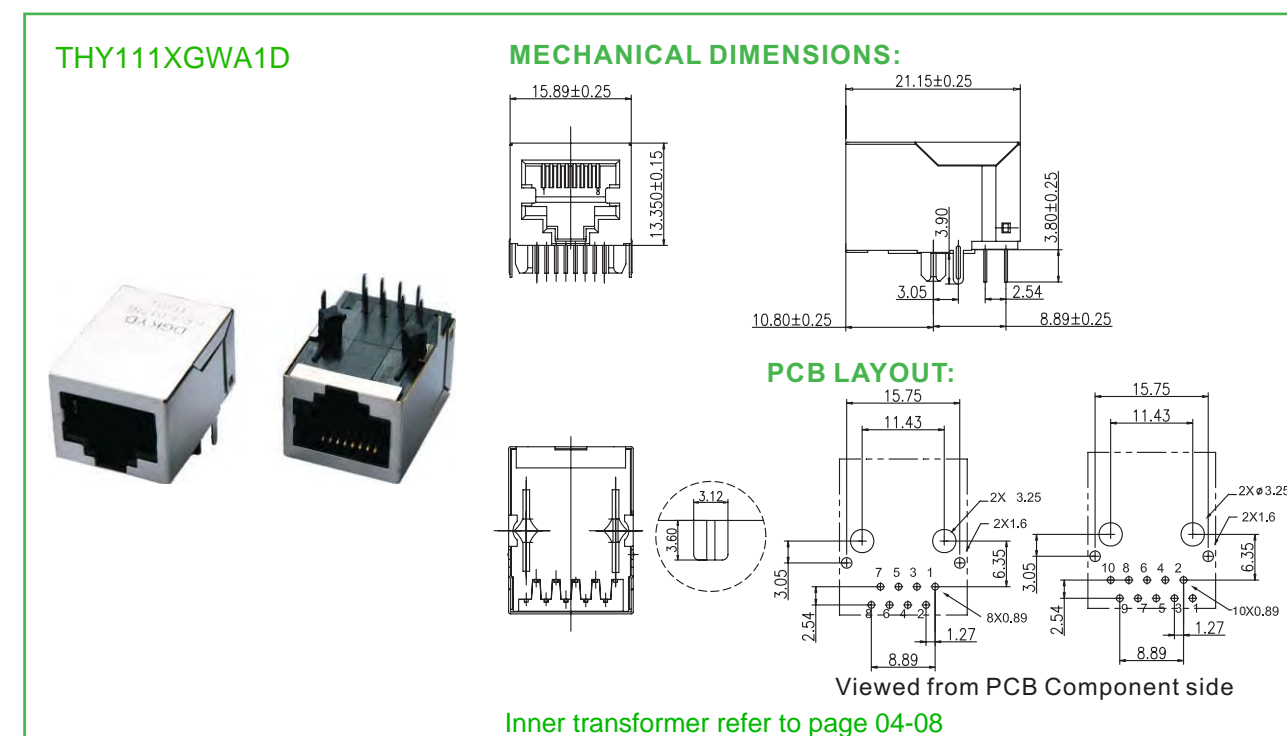
RJ45 TRANSFORMER 1x1 PORT TAP DOWN DIP 90 °



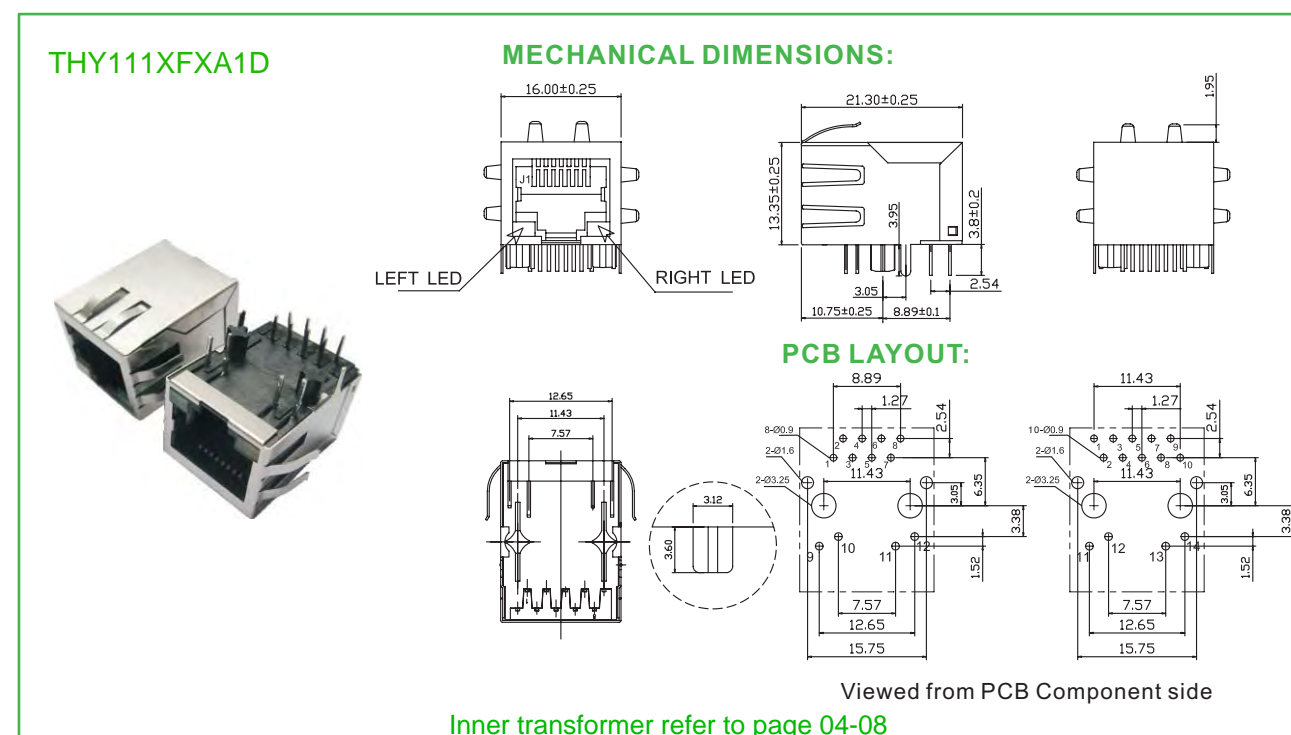
RJ45 TRANSFORMER 1x1 PORT TAP DOWN DIP 90 °



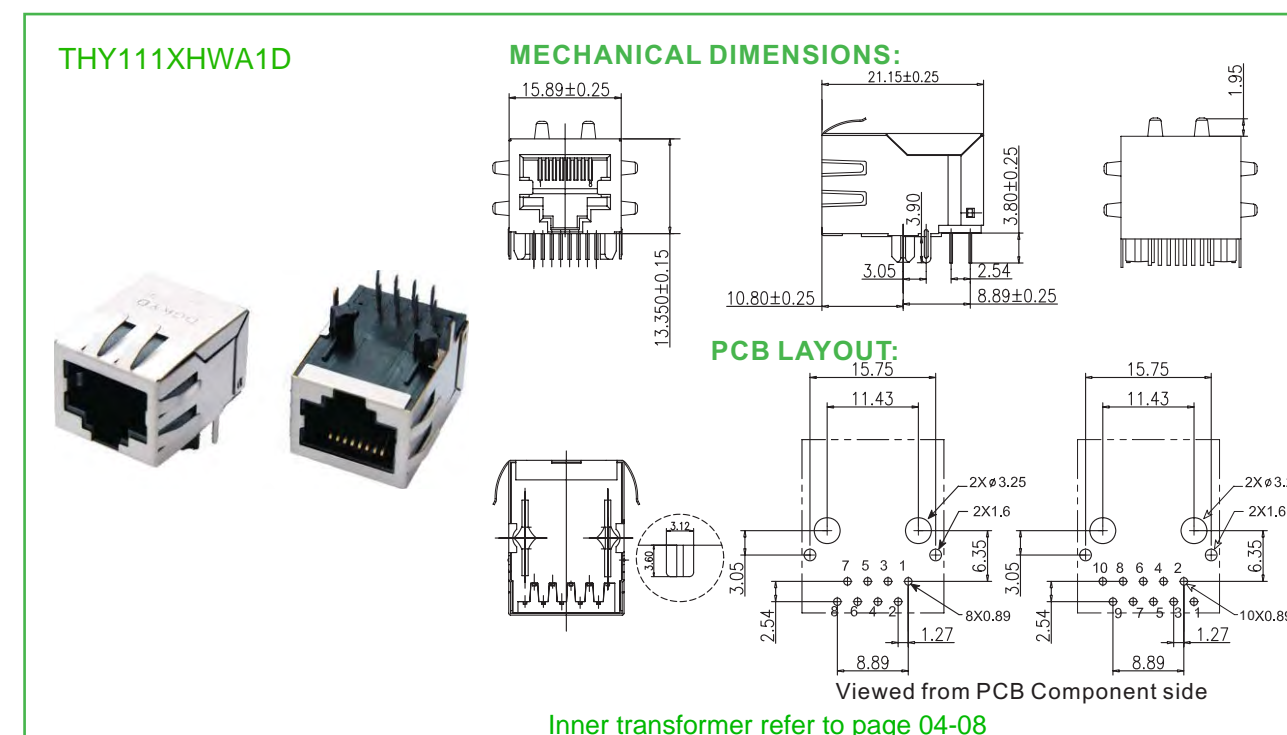
RJ45 TRANSFORMER 1x1 PORT TAP DOWN DIP 90 °



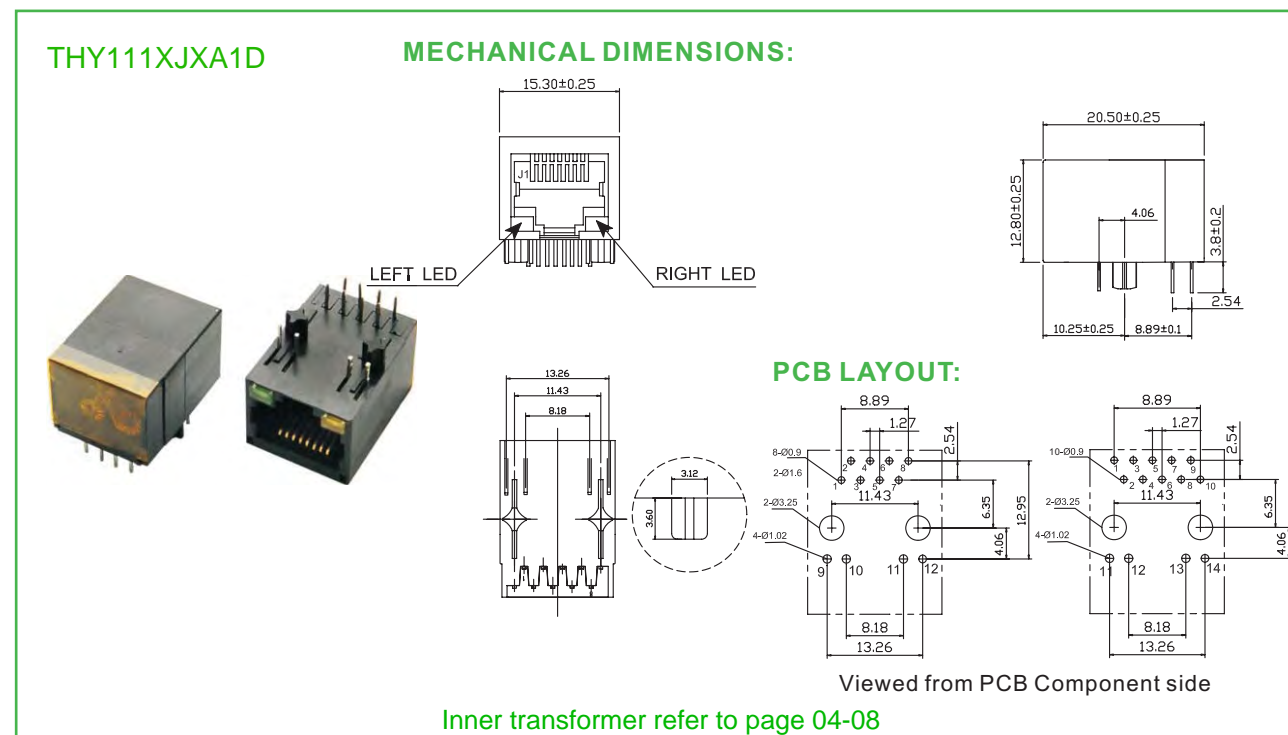
RJ45 TRANSFORMER 1x1 PORT TAP DOWN DIP 90 °



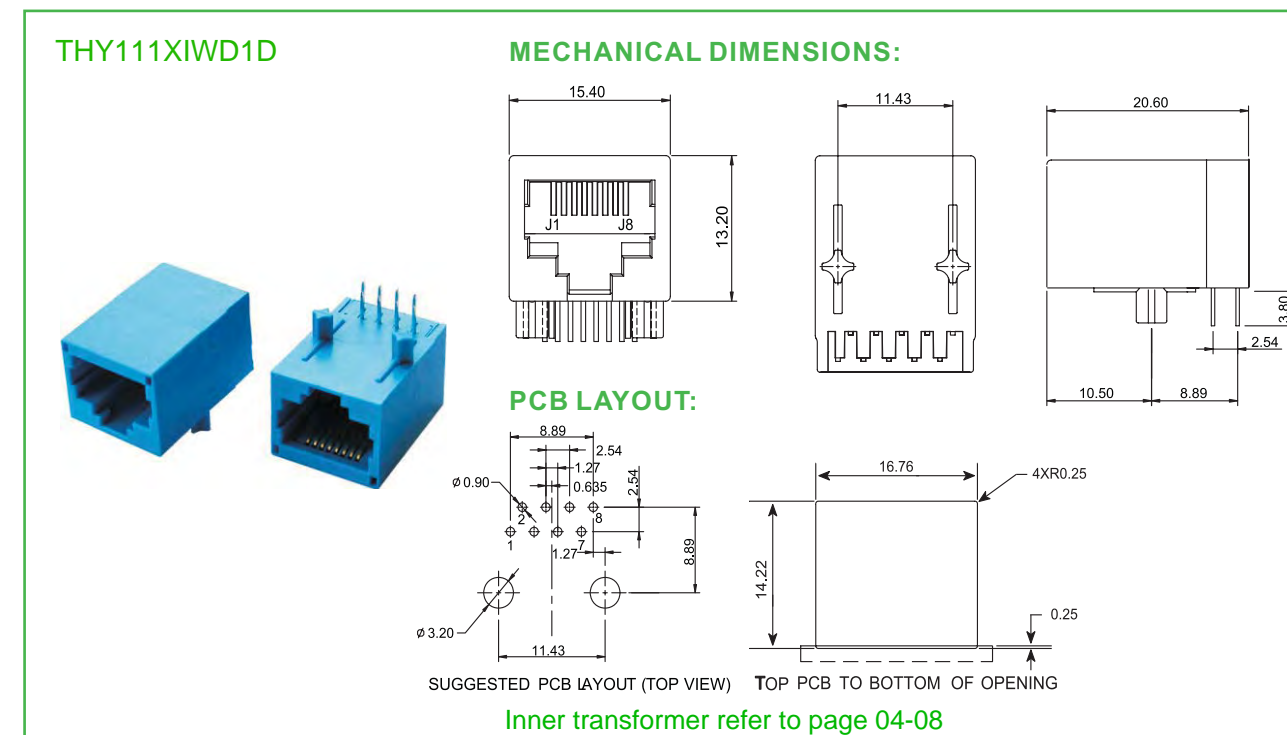
RJ45 TRANSFORMER 1x1 PORT TAP DOWN DIP 90 °



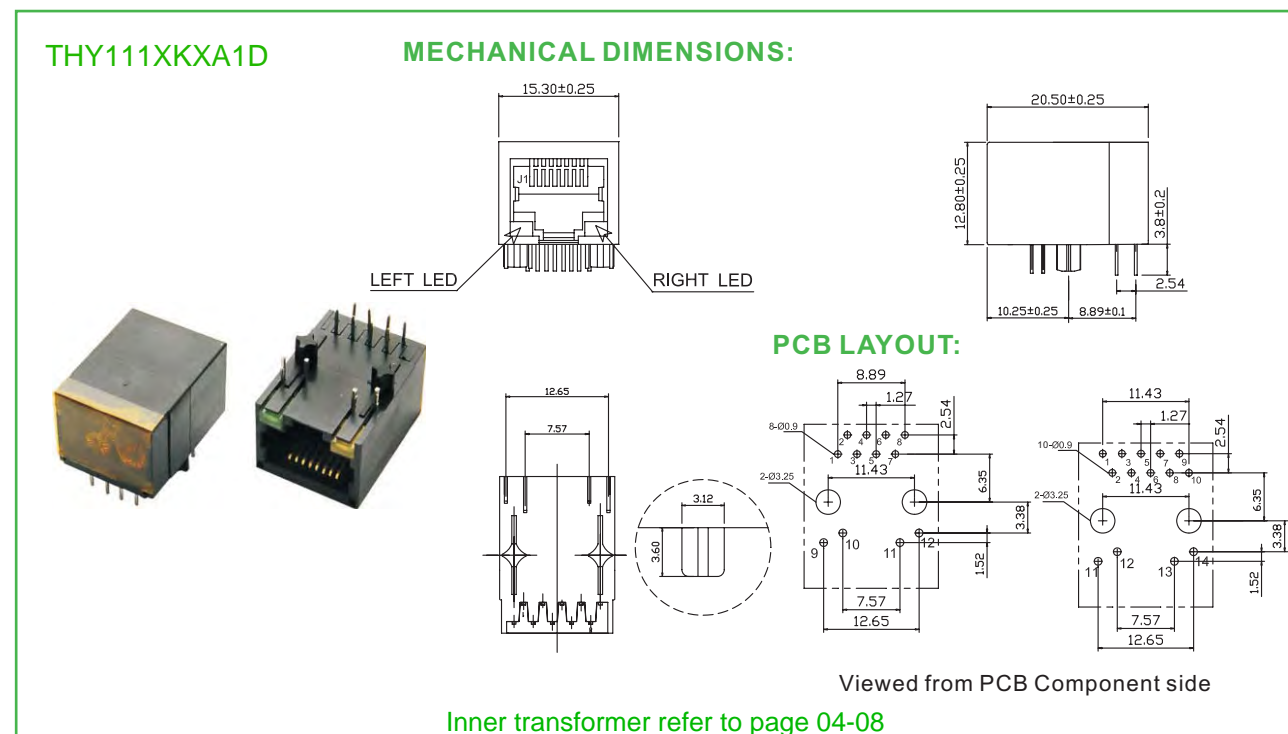
RJ45 TRANSFORMER 1x1 PORT TAP DOWN DIP 90 °



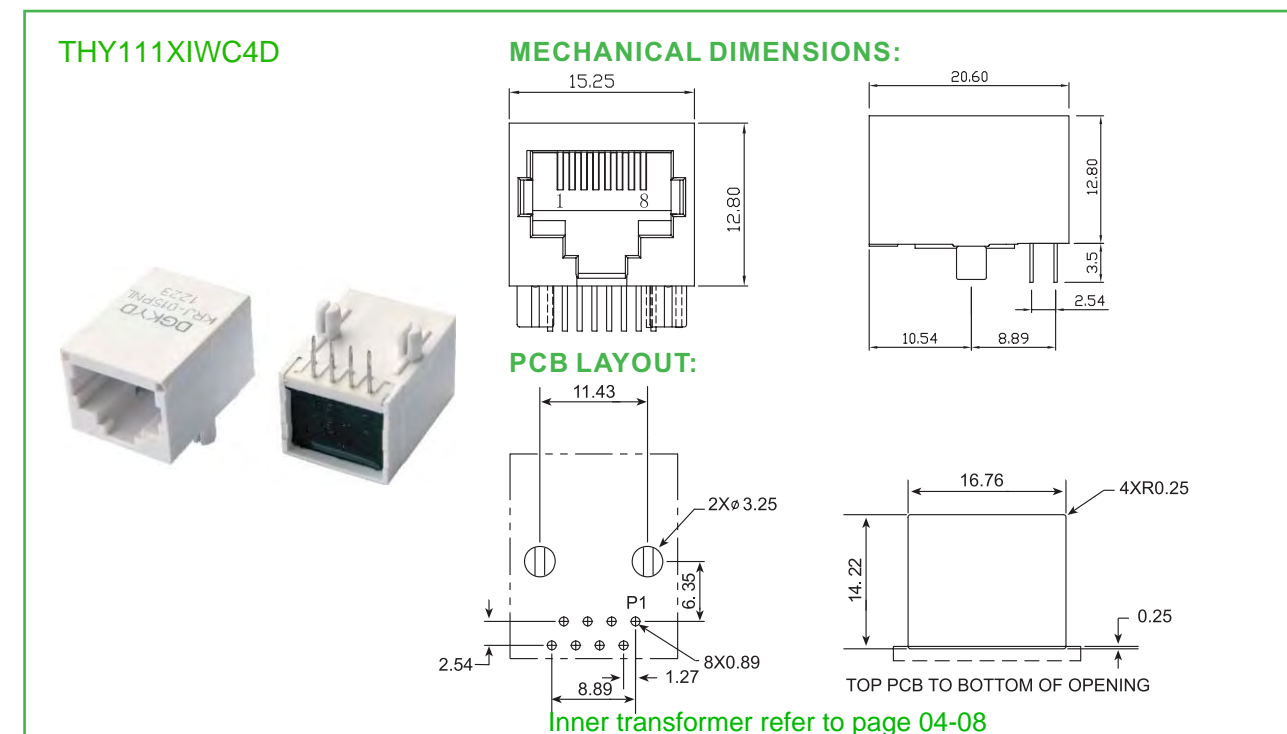
RJ45 TRANSFORMER 1x1 PORT TAP DOWN DIP 90 °



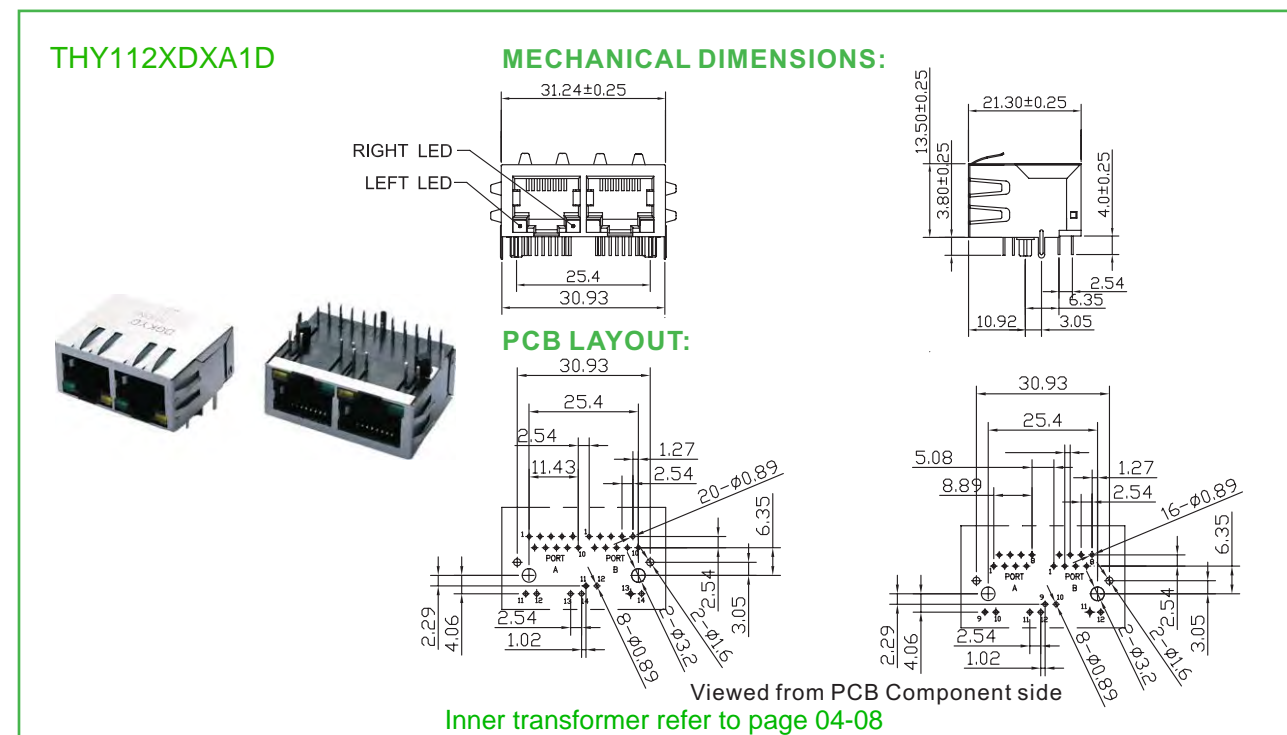
RJ45 TRANSFORMER 1x1 PORT TAP DOWN DIP 90 °



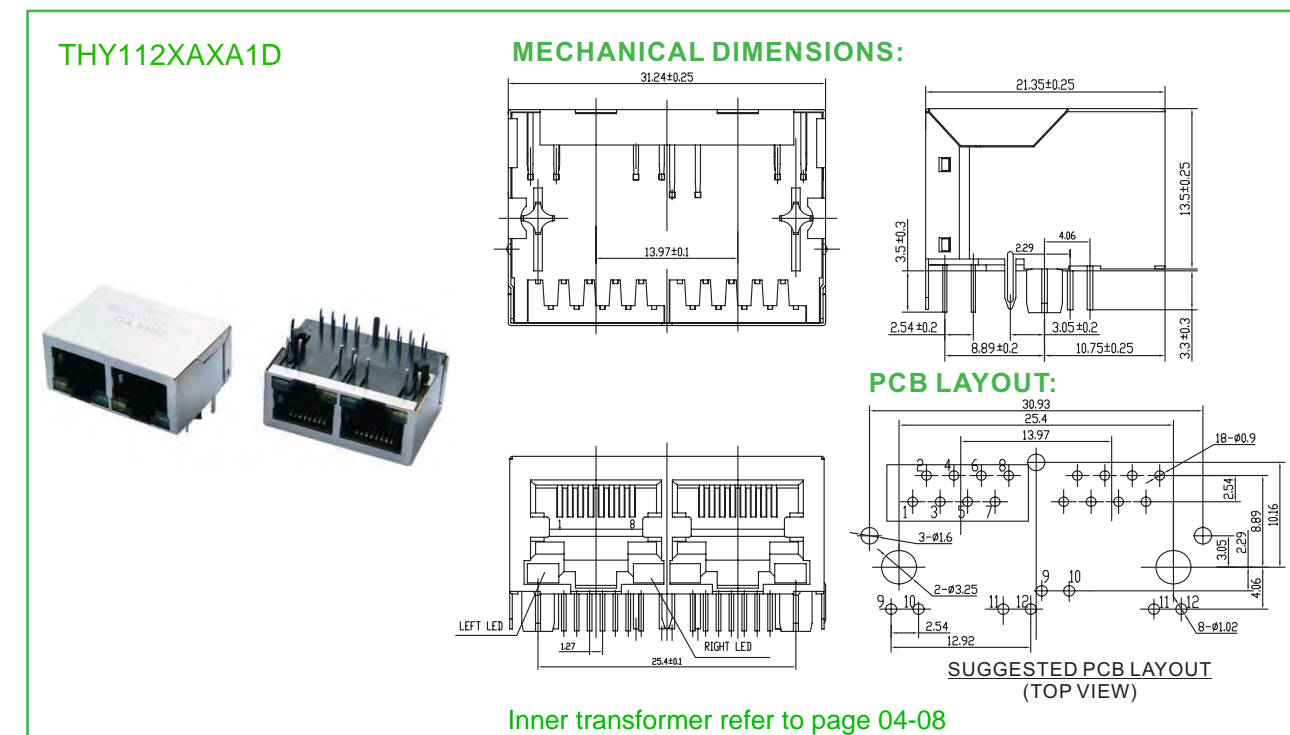
RJ45 TRANSFORMER 1x1 PORT TAP DOWN DIP 90 °



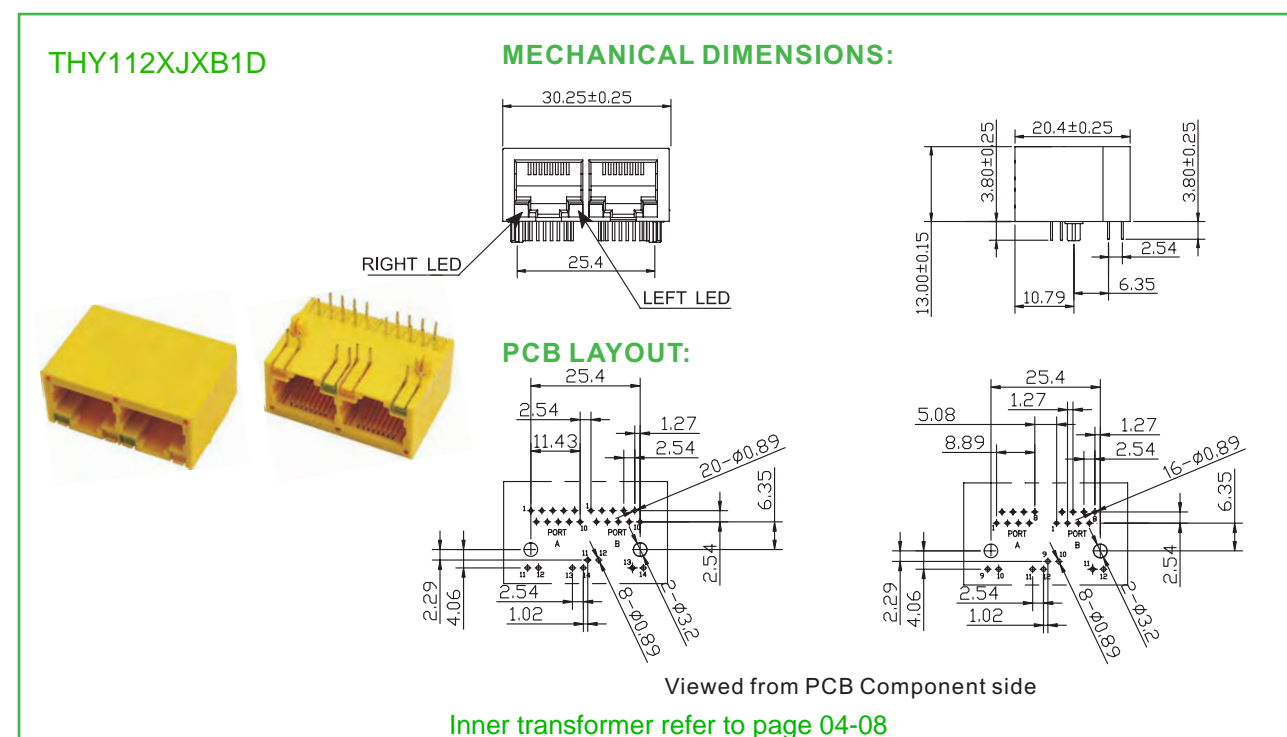
RJ45 TRANSFORMER 1XN PORT TAP DOWN DIP 90 °



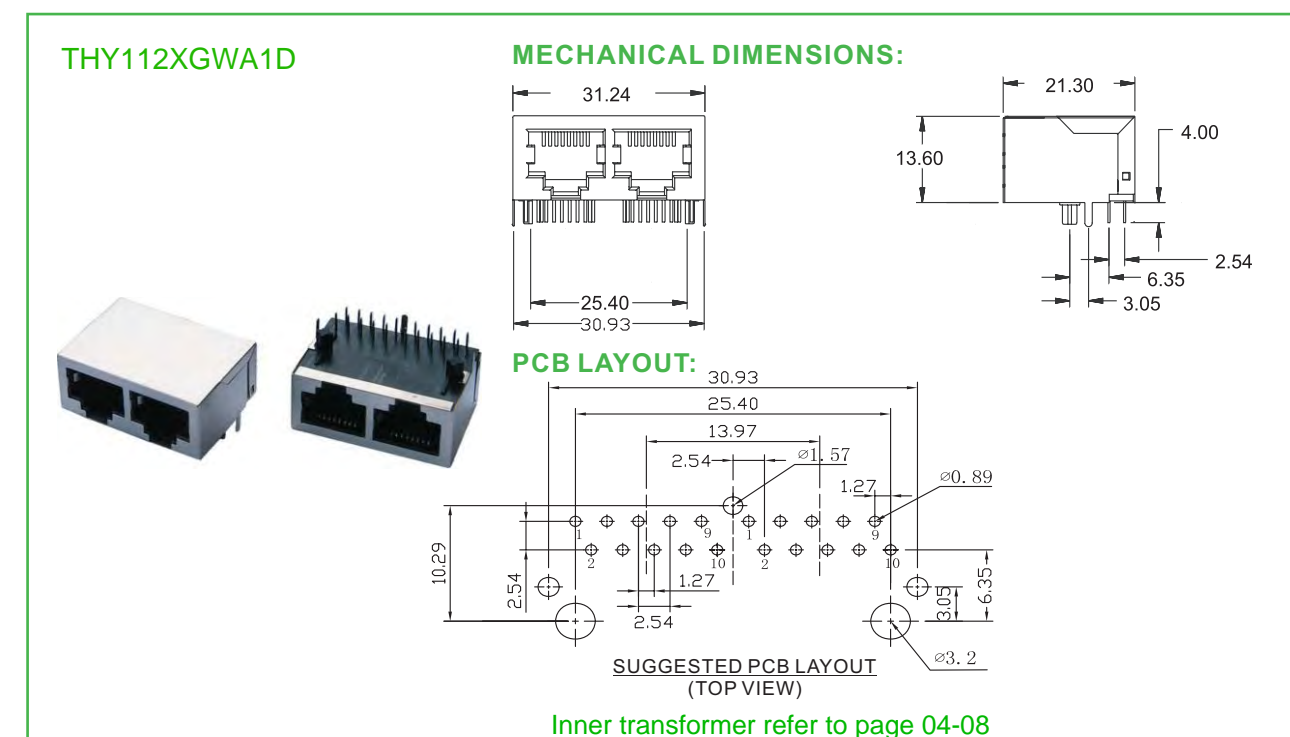
RJ45 TRANSFORMER 1XN PORT TAP DOWN DIP 90 °



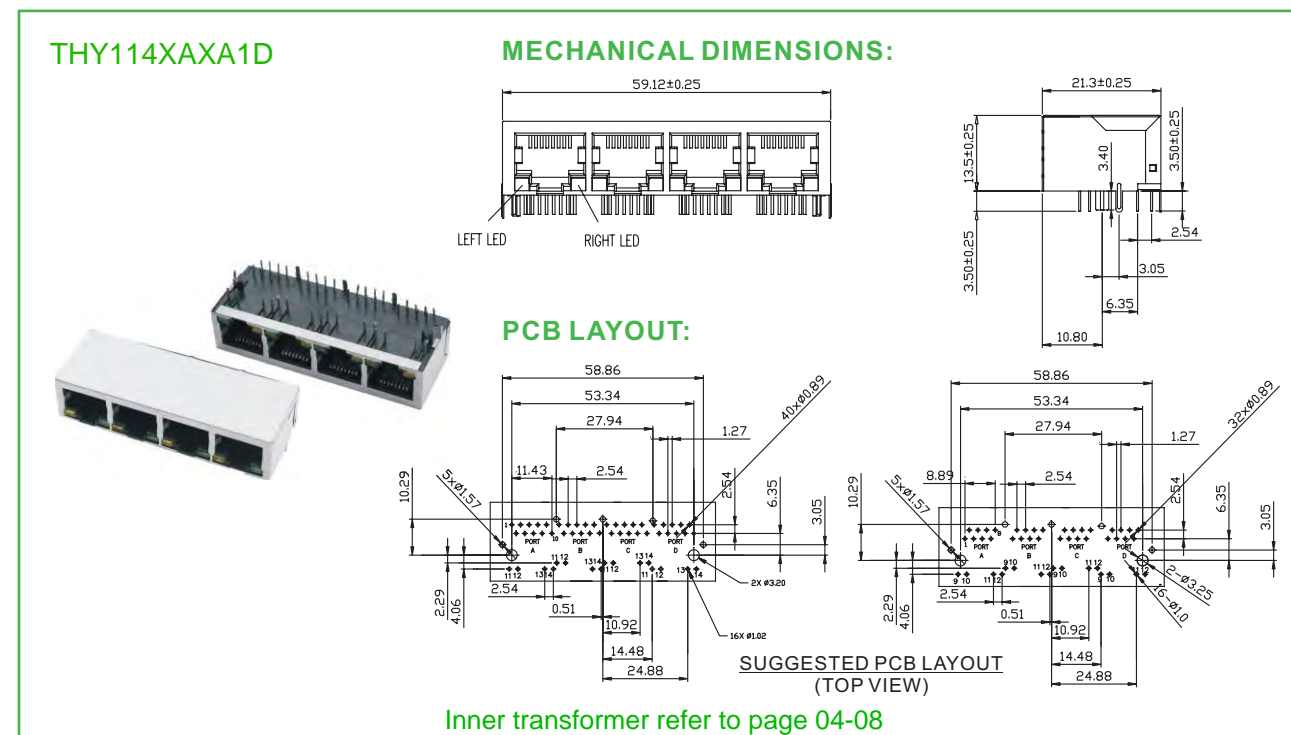
RJ45 TRANSFORMER 1xN PORT TAP DOWN DIP 90 °



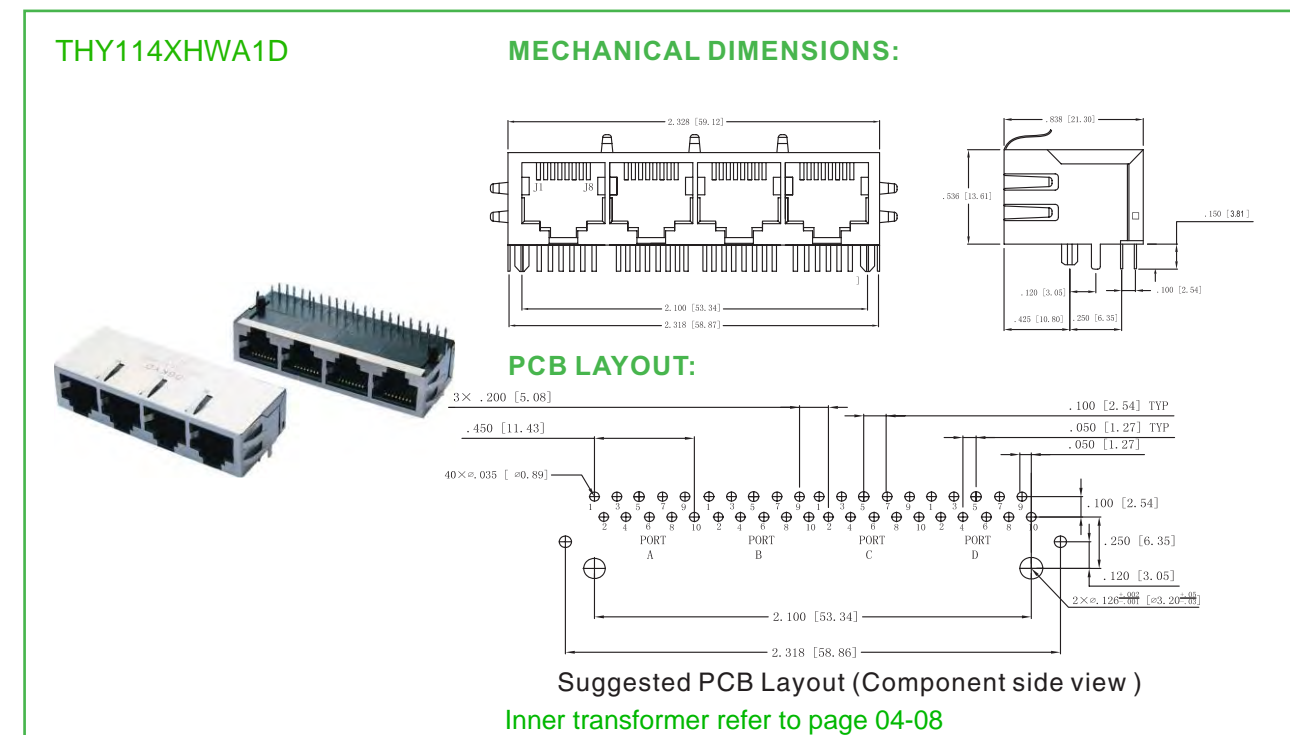
RJ45 TRANSFORMER 1XN PORT TAP DOWN DIP 90 °



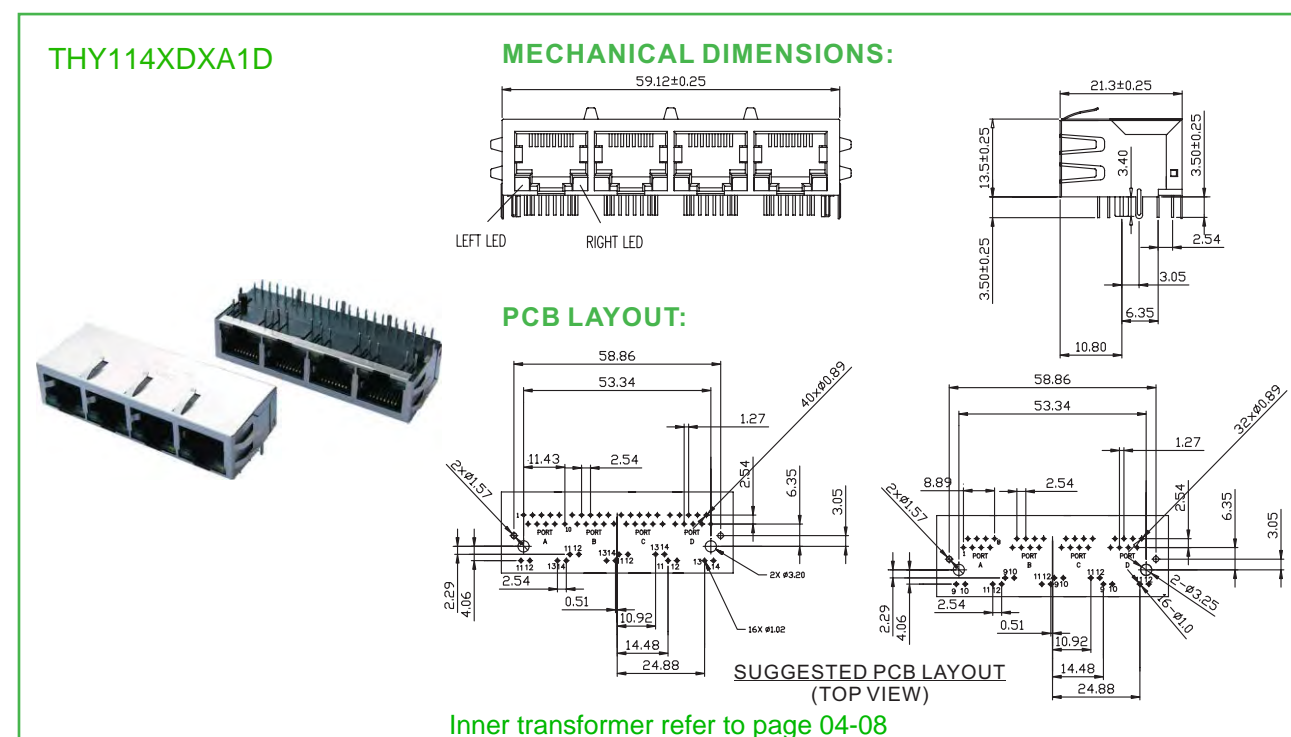
RJ45 TRANSFORMER 1xN PORT TAP DOWN DIP 90 °



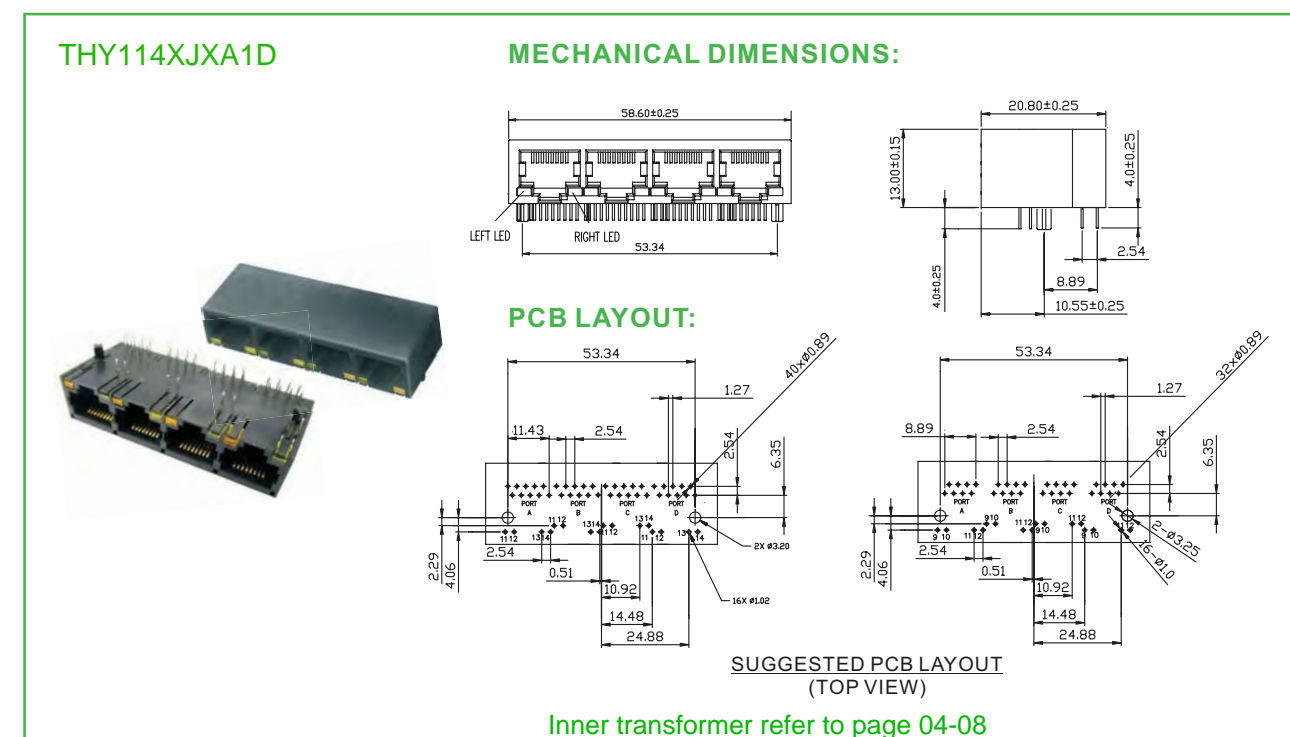
RJ45 TRANSFORMER 1xN PORT TAP DOWN DIP 90 °



RJ45 TRANSFORMER 1xN PORT TAP DOWN DIP 90 °



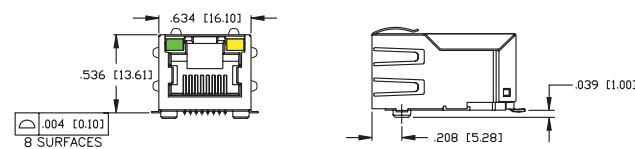
RJ45 TRANSFORMER 1xN PORT TAP DOWN DIP 90 °



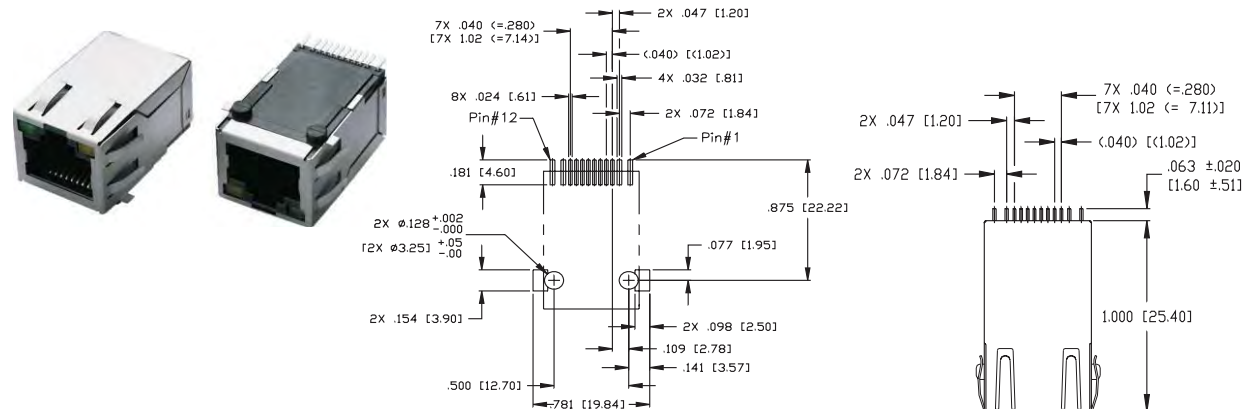
RJ45 TRANSFORMER TAP UP SMT

THY311XDXA7S

MECHANICAL DIMENSIONS:



PCB LAYOUT:



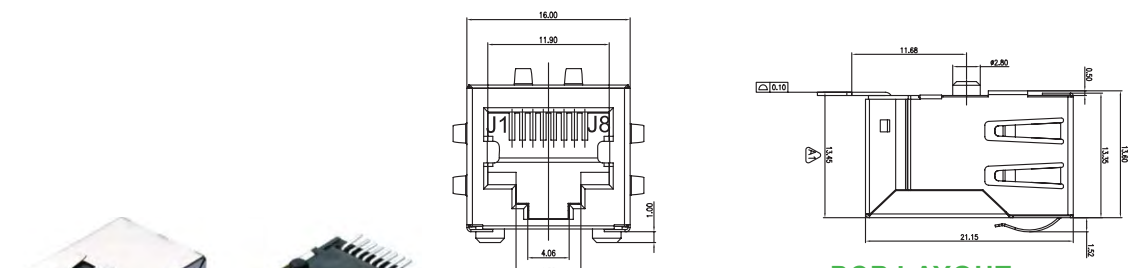
Suggested PCB Layout (Component side view)

Inner transformer refer to page 04-08

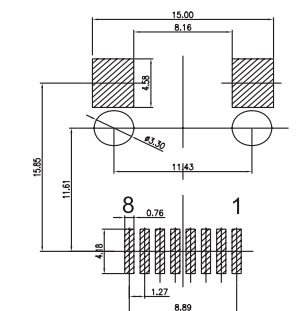
RJ45 TRANSFORMER TAP UP SMT

THY111XHWA6S

MECHANICAL DIMENSIONS:



PCB LAYOUT:



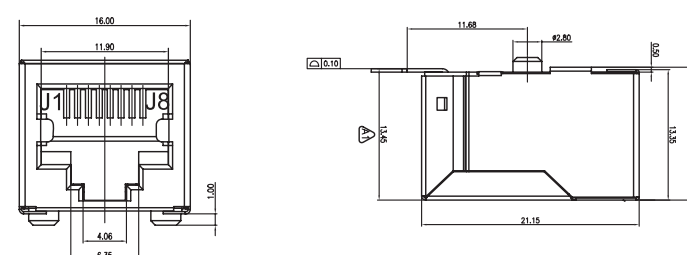
Viewed from PCB Component side

Inner transformer refer to page 04-08

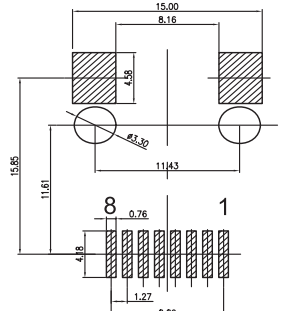
RJ45 TRANSFORMER TAP UP SMT

THY111XGXA6S

MECHANICAL DIMENSIONS:



PCB LAYOUT:



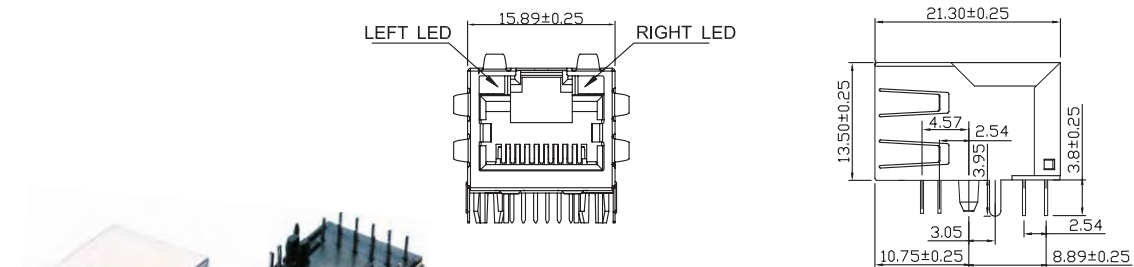
Suggested PCB Layout

Inner transformer refer to page 04-08

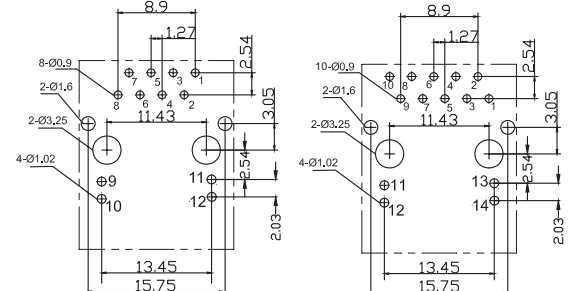
RJ45 TRANSFORMER TAP UP DIP 90 °

THY211XFXA4D

MECHANICAL DIMENSIONS:



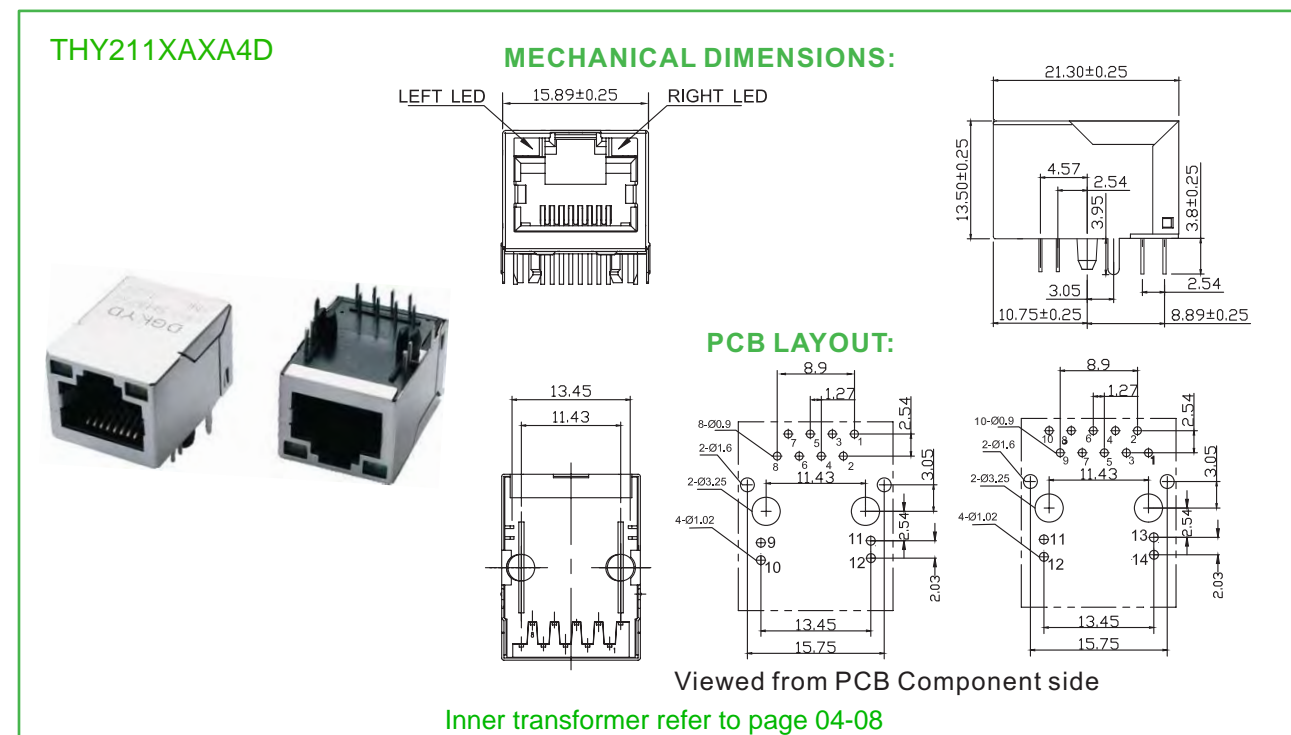
PCB LAYOUT:



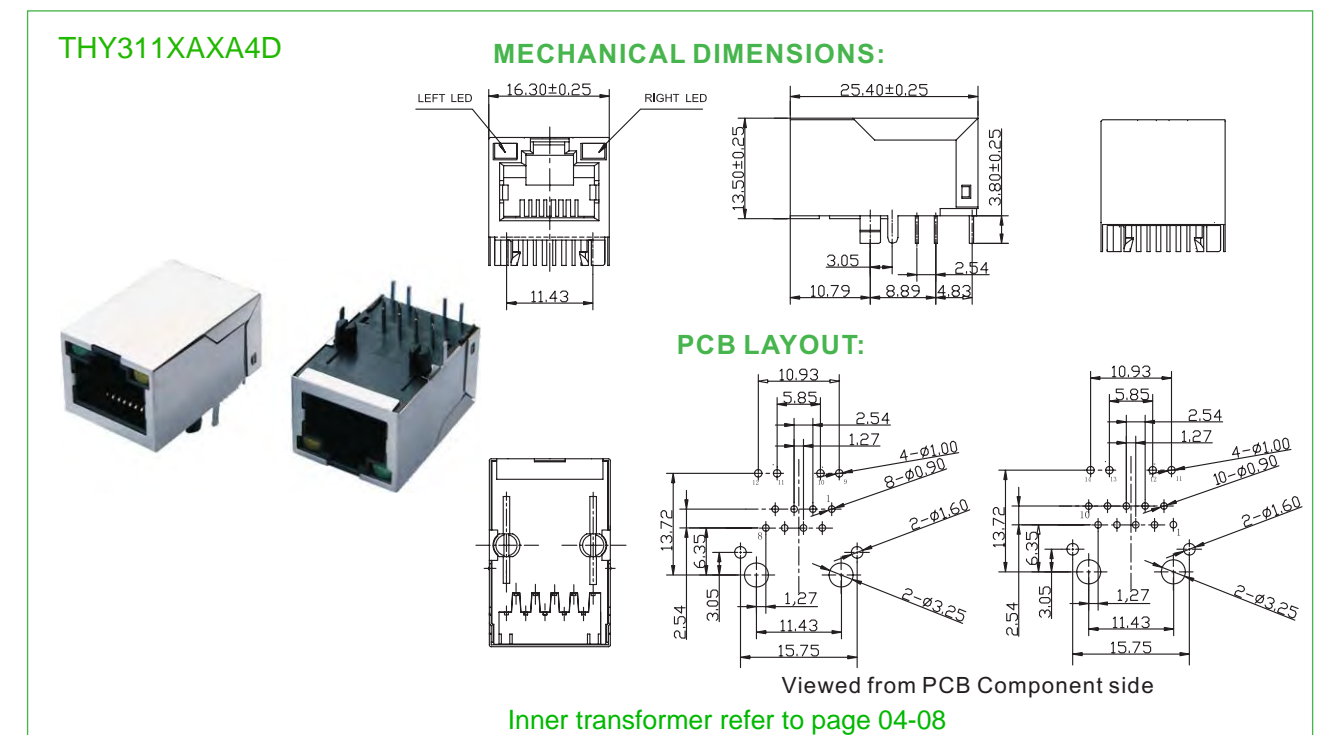
Viewed from PCB Component side

Inner transformer refer to page 04-08

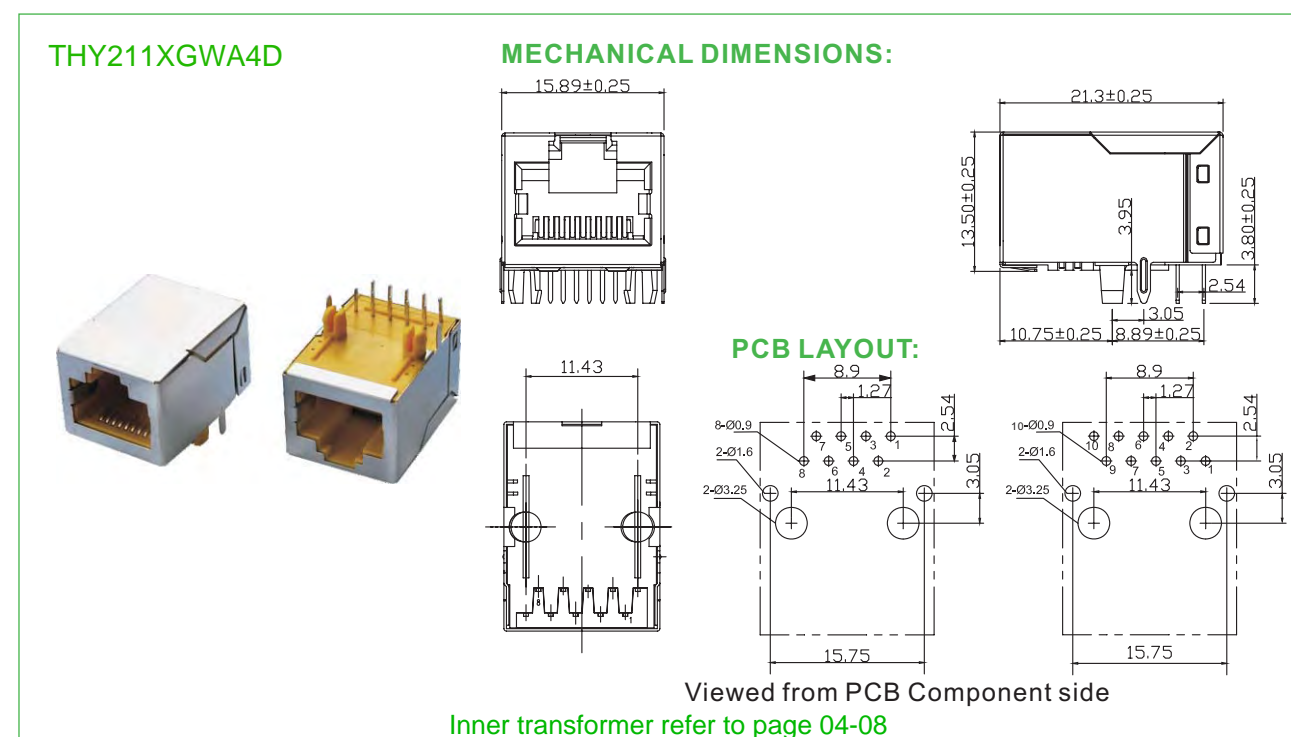
RJ45 TRANSFORMER TAP UP DIP 90 °



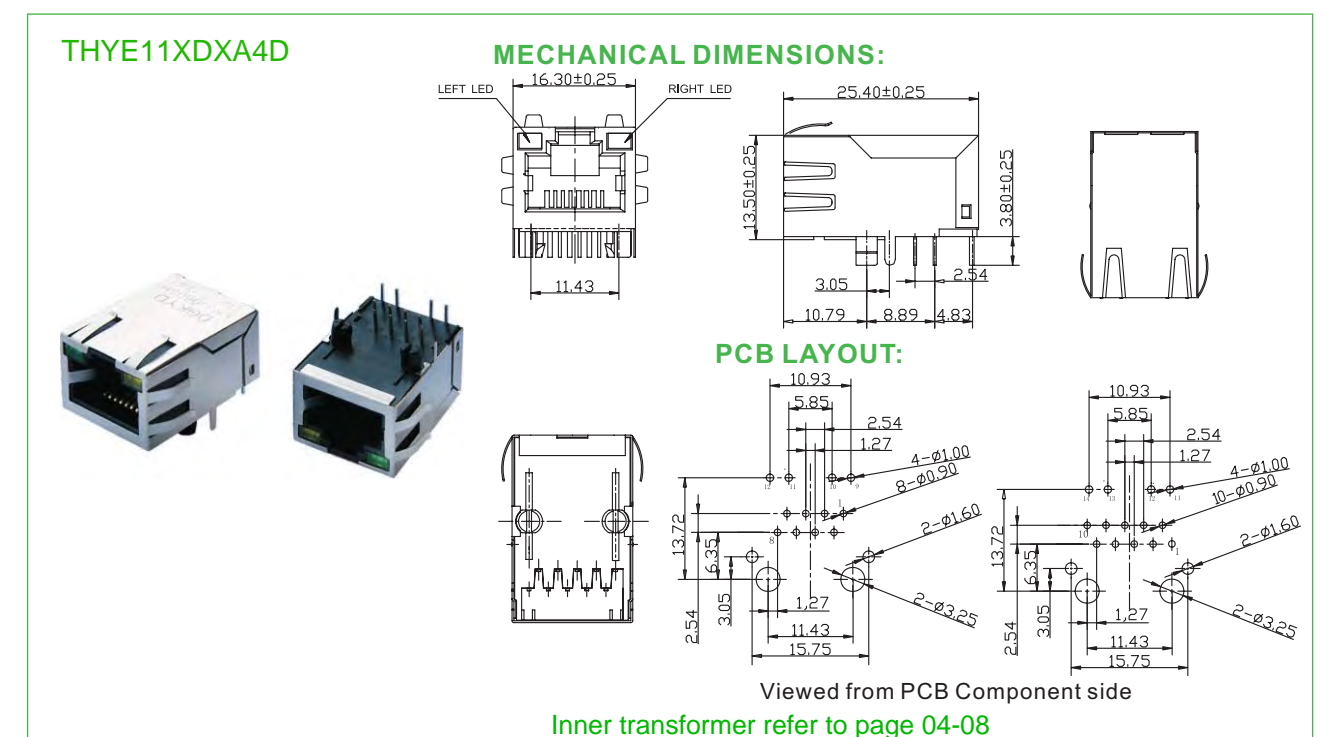
RJ45 TRANSFORMER TAP UP DIP 90 °



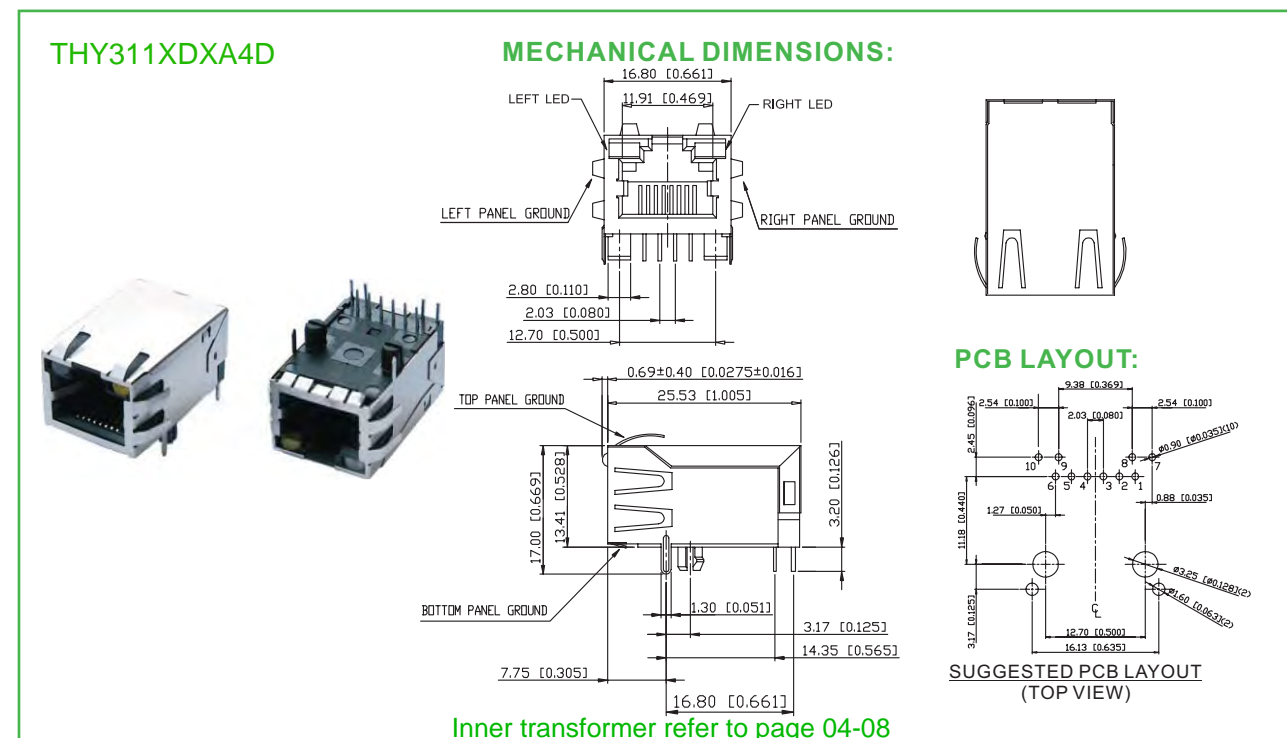
RJ45 TRANSFORMER TAP UP DIP 90 °



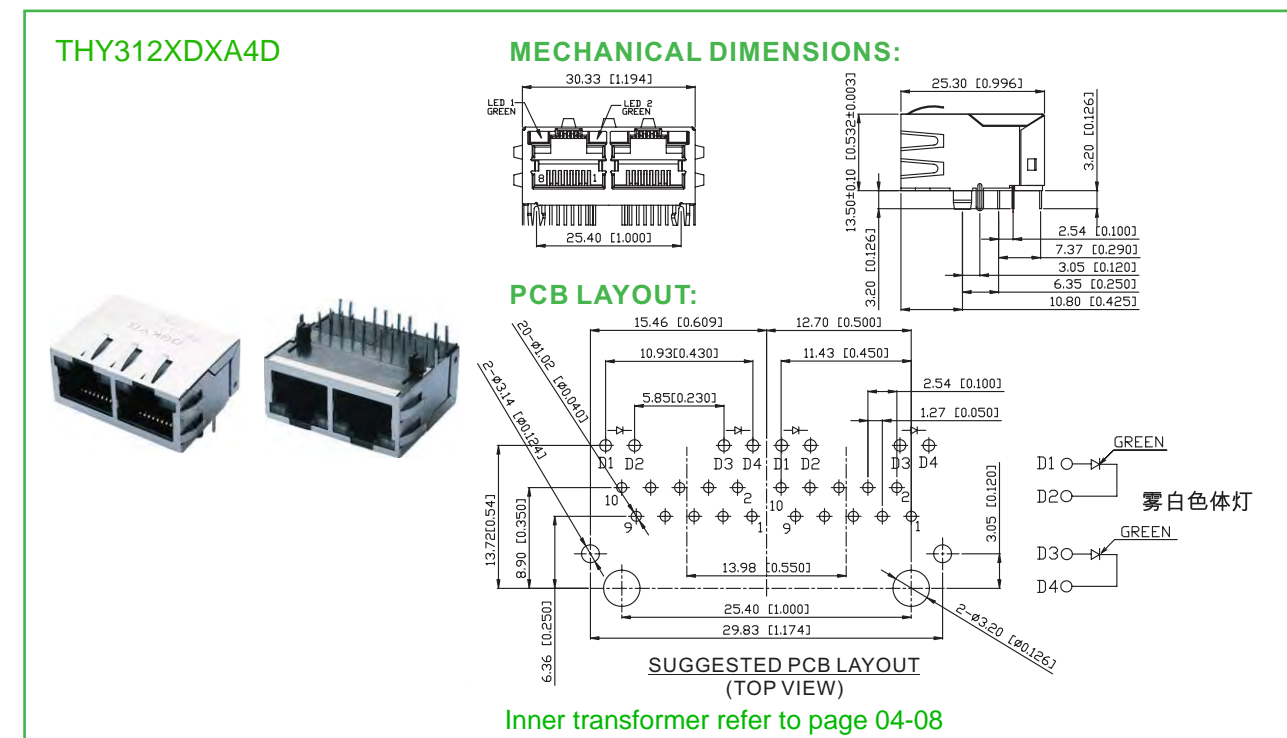
RJ45 TRANSFORMER TAP UP DIP 90 °



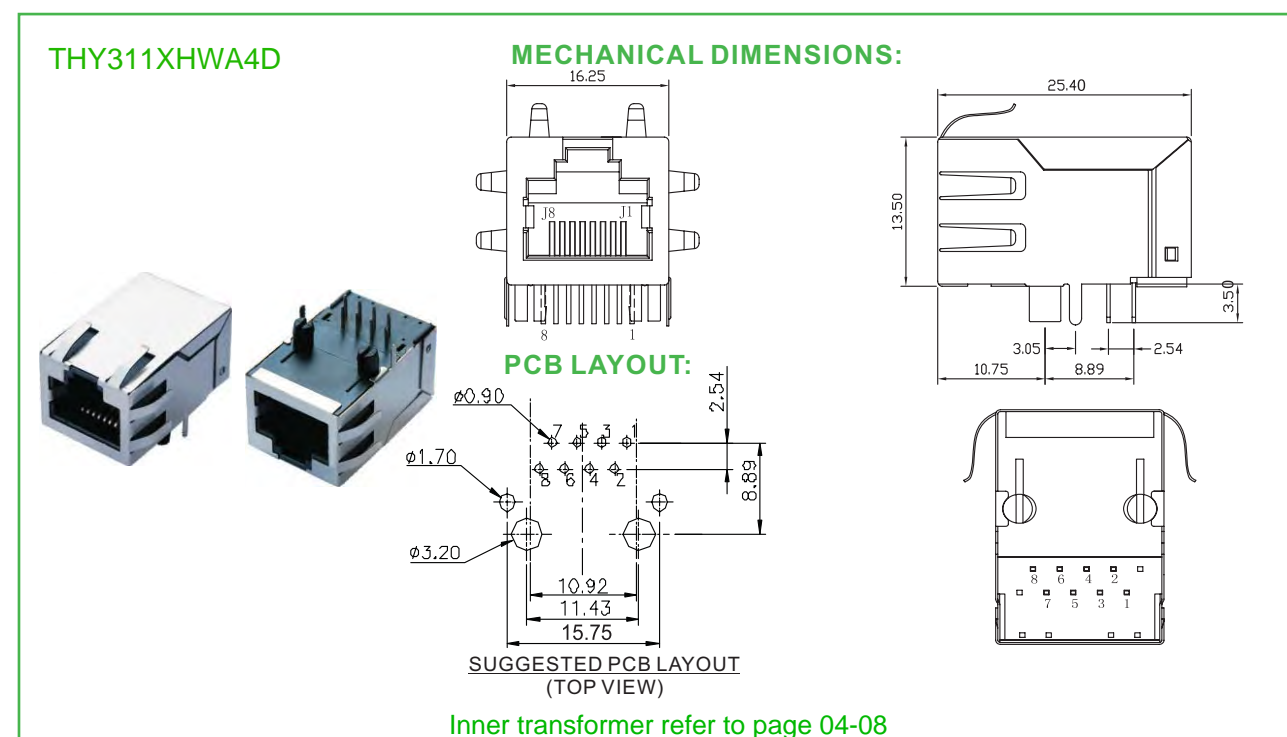
RJ45 TRANSFORMER TAP UP DIP 90 °



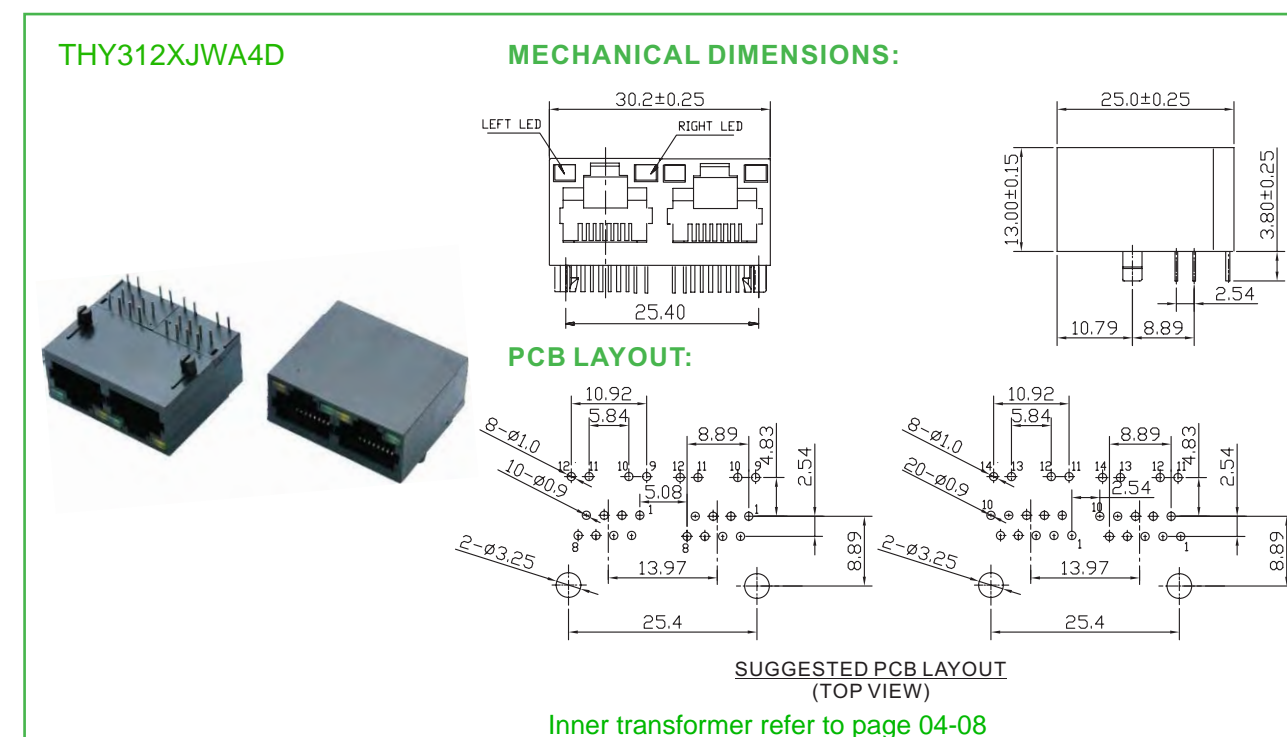
RJ45 TRANSFORMER TAP UP DIP 90 °



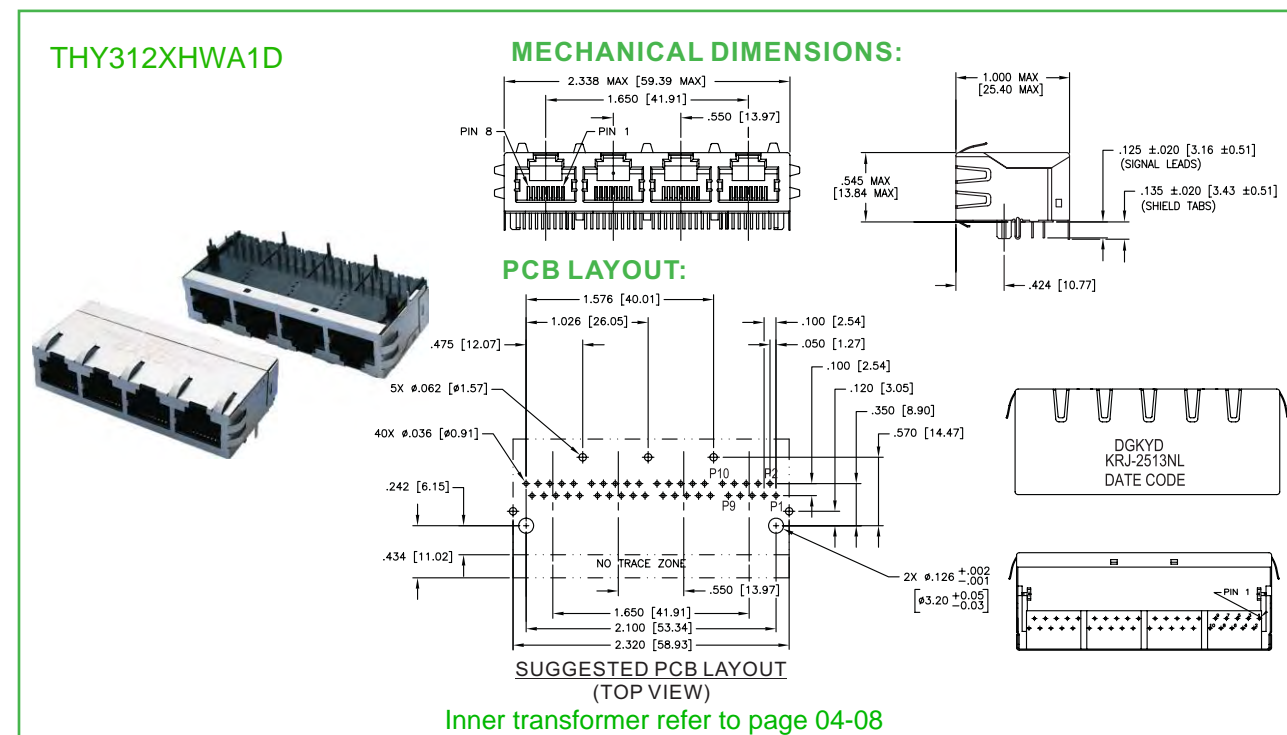
RJ45 TRANSFORMER TAP UP DIP 90 °



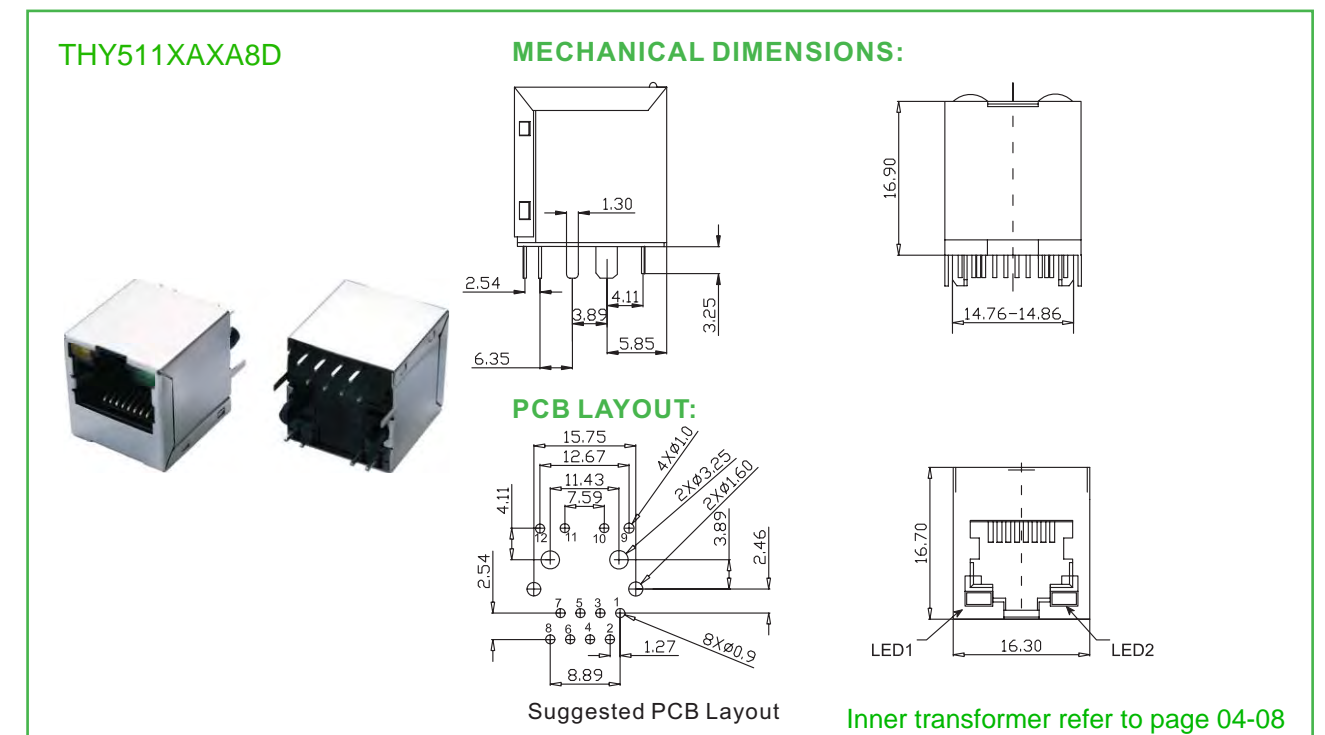
RJ45 TRANSFORMER TAP UP DIP 90 °



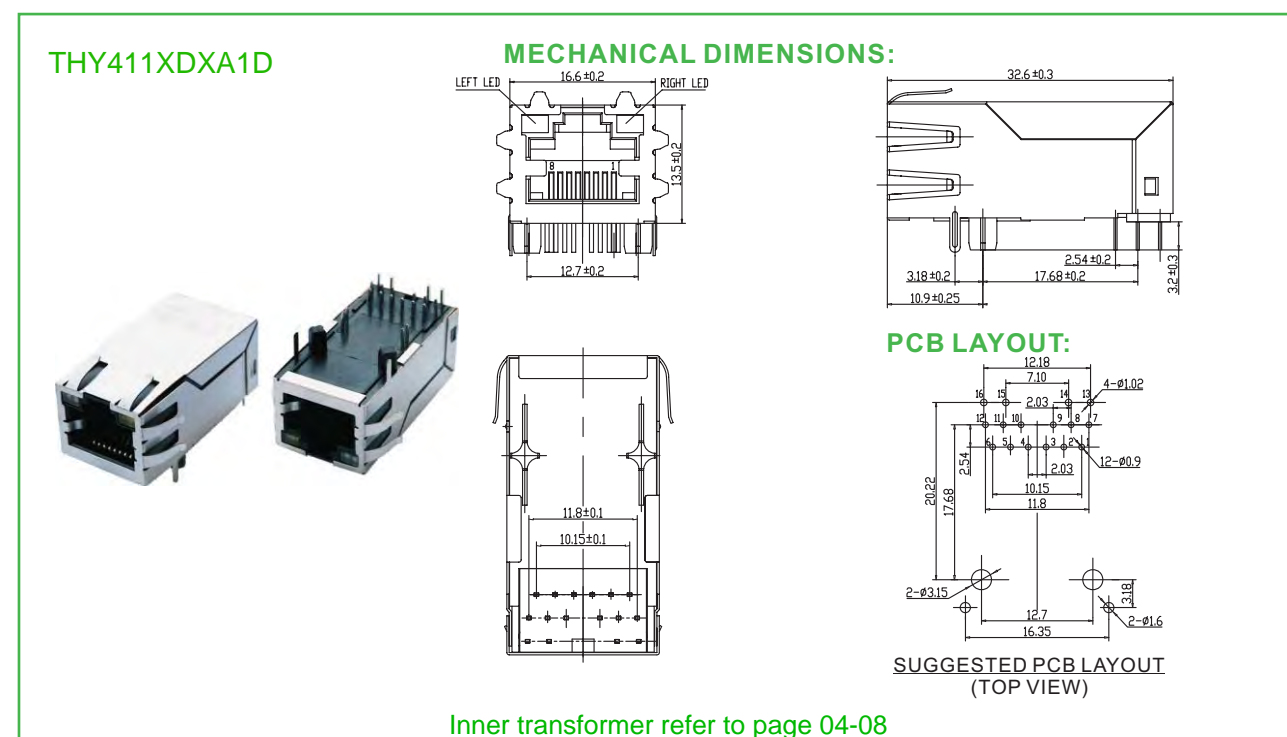
RJ45 TRANSFORMER TAP UP DIP 90 °



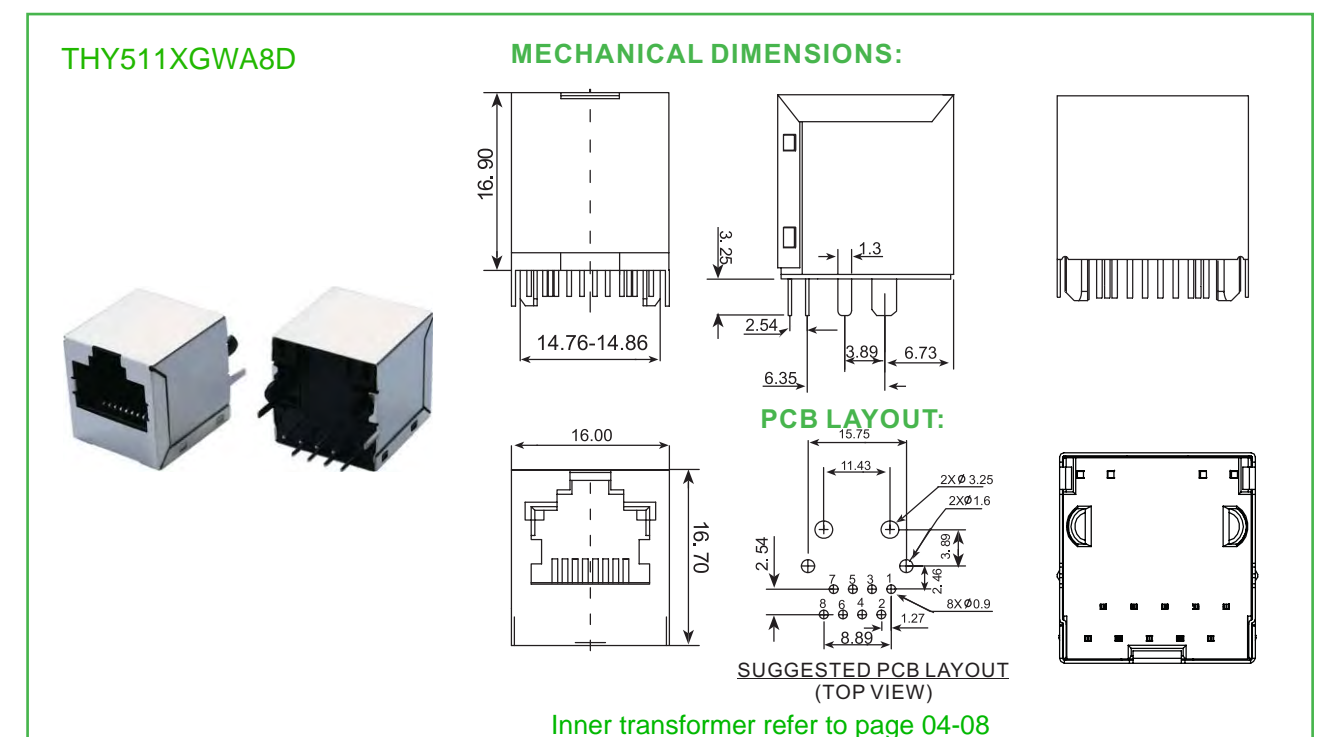
RJ45 TRANSFORMER DIP 180 °



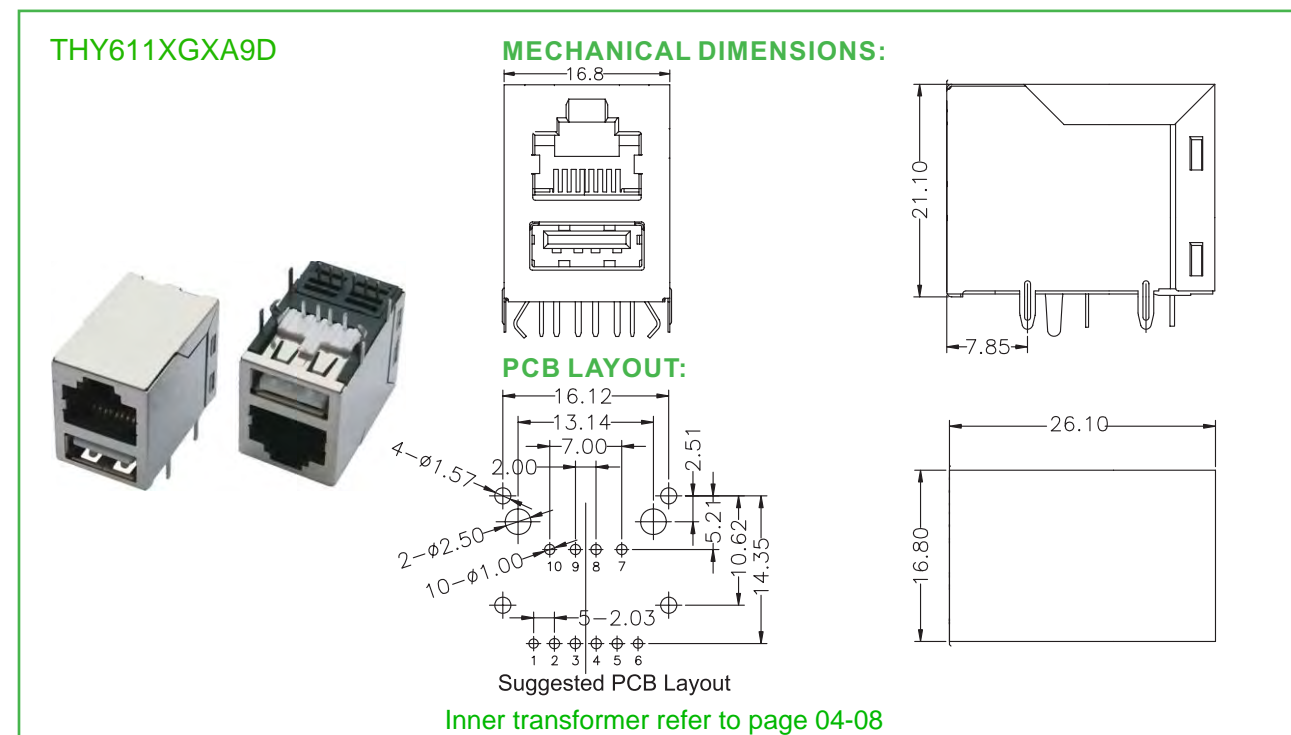
RJ45 TRANSFORMER TAP UP DIP 90 °



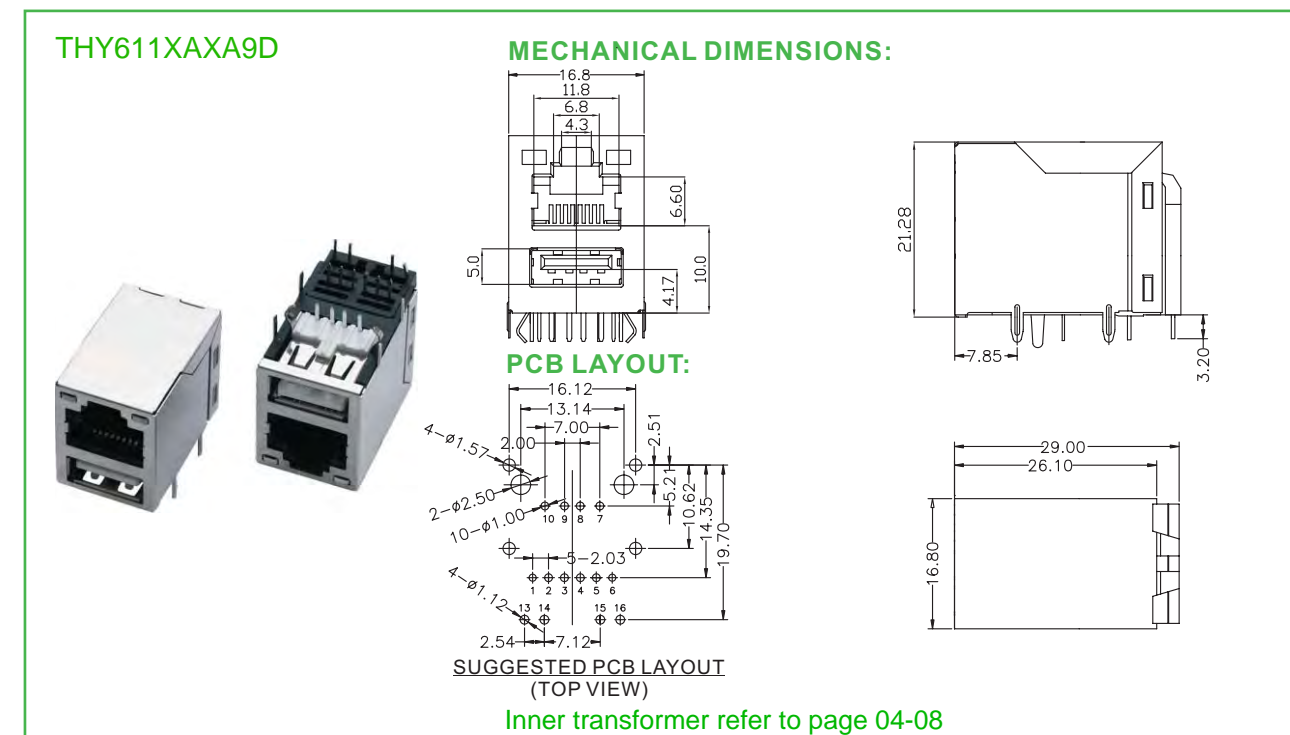
RJ45 TRANSFORMER DIP 180 °



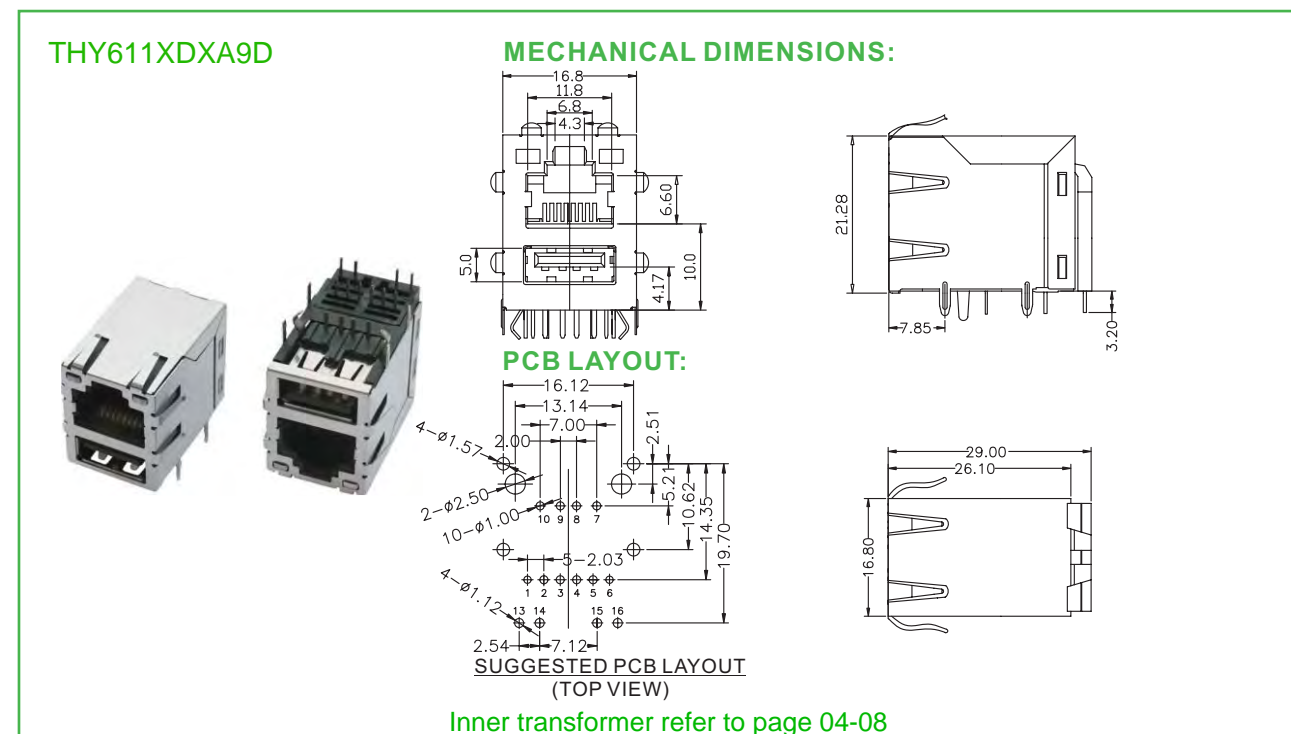
RJ45 TRANSFORMER WITH USB DIP 90 °



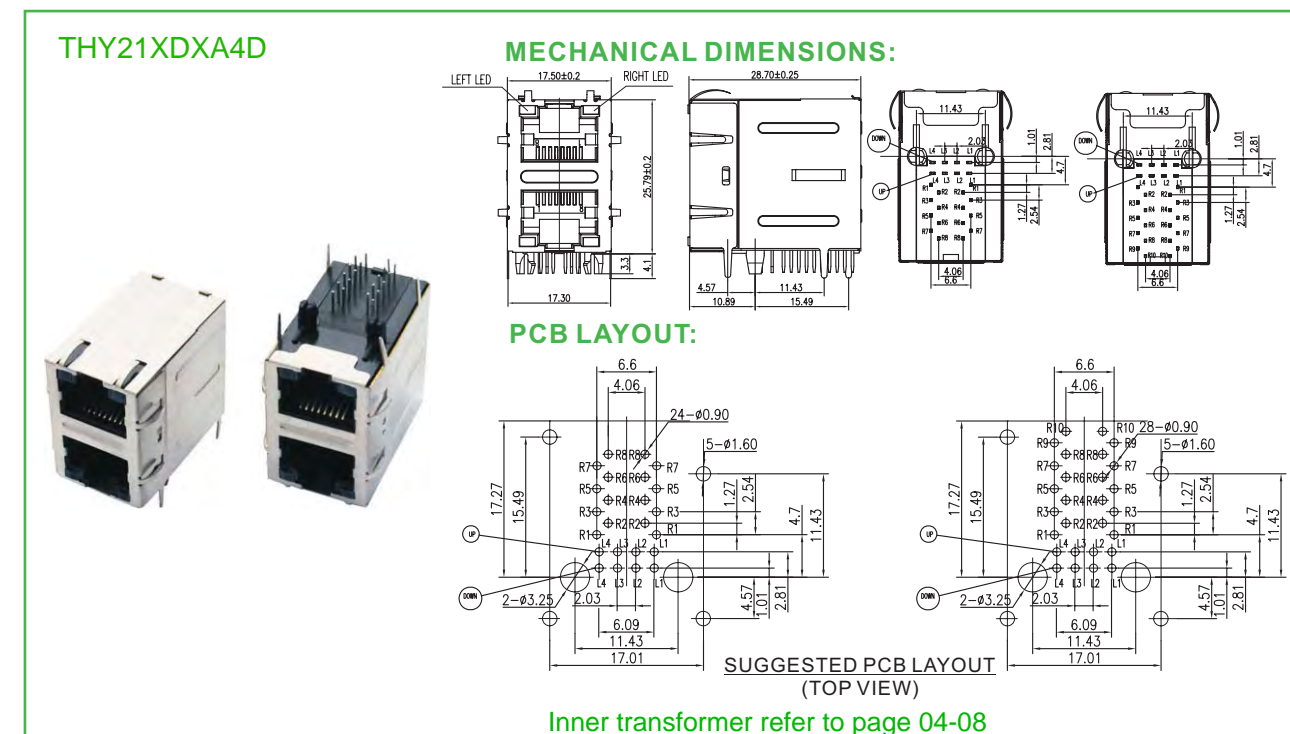
RJ45 TRANSFORMER WITH USB DIP 90 °



RJ45 TRANSFORMER WITH USB DIP 90 °



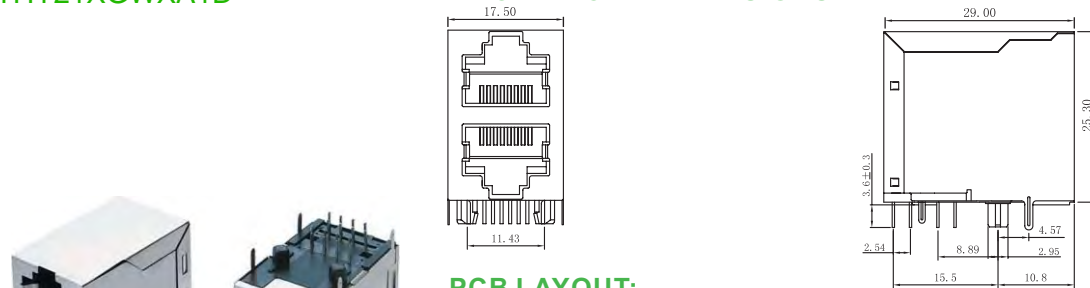
Rj45 TRANSFORMER 2xN WITH LED DIP 90 °



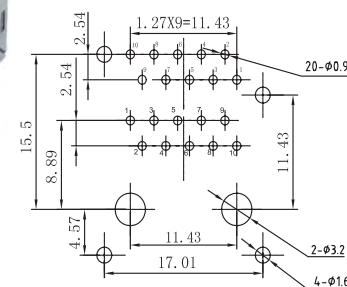
RJ45 TRANSFORMER 2xN WITH LED DIP 90 °

THY21XGWA1D

MECHANICAL DIMENSIONS:



PCB LAYOUT:



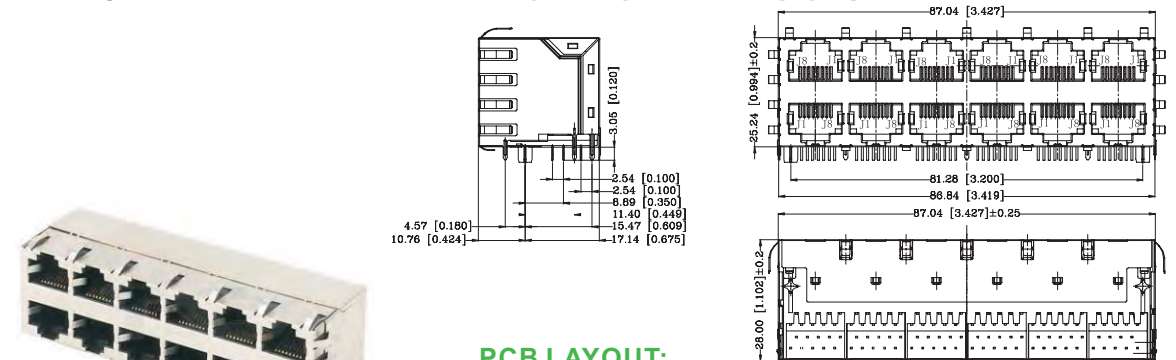
SUGGESTED PCB LAYOUT
(TOP VIEW)

Inner transformer refer to page 04-08

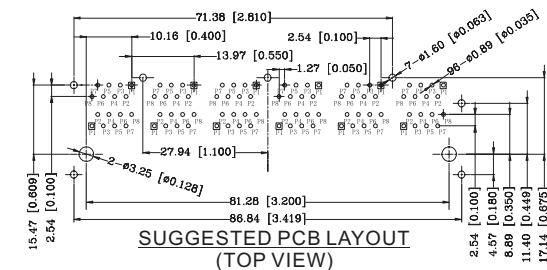
RJ45 TRANSFORMER 2xN WITH LED DIP 90 °

THY26XHWA1D

MECHANICAL DIMENSIONS:



PCB LAYOUT:



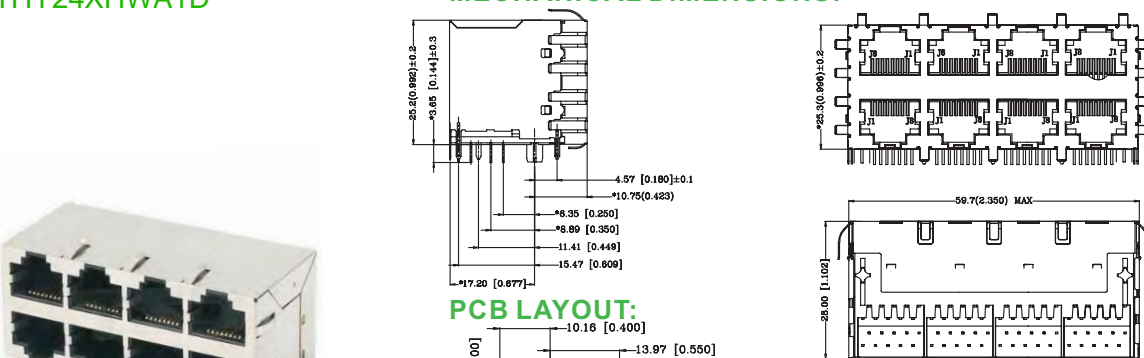
SUGGESTED PCB LAYOUT
(TOP VIEW)

Inner transformer refer to page 04-08

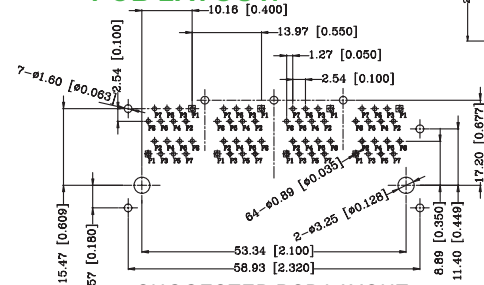
RJ45 TRANSFORMER 2xN WITH LED DIP 90 °

THY24XHWA1D

MECHANICAL DIMENSIONS:



PCB LAYOUT:



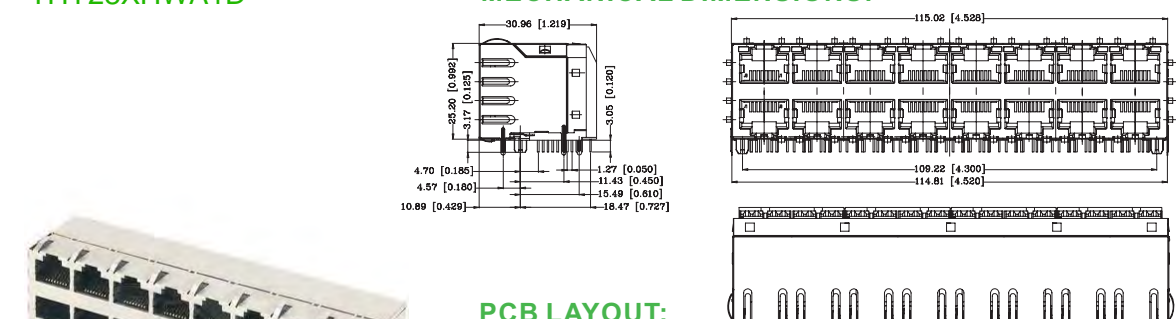
SUGGESTED PCB LAYOUT
(TOP VIEW)

Inner transformer refer to page 04-08

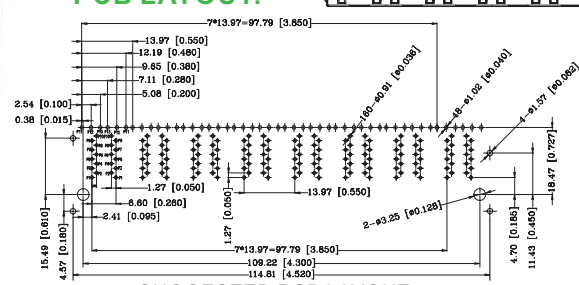
RJ45 TRANSFORMER 2xN WITH LED DIP 90 °

THY28XHWA1D

MECHANICAL DIMENSIONS:



PCB LAYOUT:



SUGGESTED PCB LAYOUT
(TOP VIEW)

Inner transformer refer to page 04-08

THE SECOND PART

产品展示



产品展示

带滤波器产品 Product with filter



THY-003NL



THY-003CNL



THY-138ENL



THY-138NL



THY-060NL



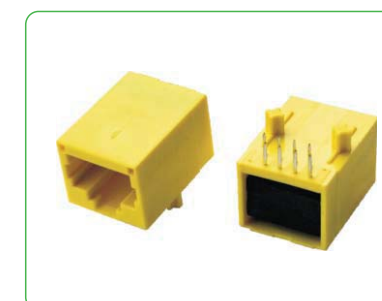
THY-015NL



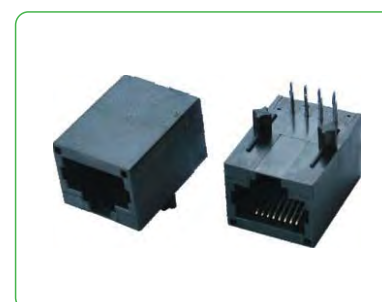
THY-017NL



THY-13PBNL



THY-015DJWDNL



THY-015WNL



THY-015PNL



THY-SM015NL

带滤波器产品 Product with filter



THY-202ENL



THY-CB001NL



THY-180RNL



THY-181NL



THY-18111NL



THY-H56NL



THY-SH1001NL



THY-H008WDNL



THY-254DPNL



THY-060SHZNL



THY-098FNL

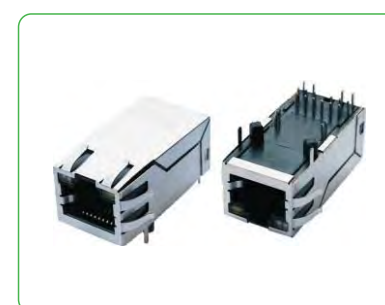


THY-SM002NL

带滤波器产品 Product with filter



THY-339ANL



THY-339PNL



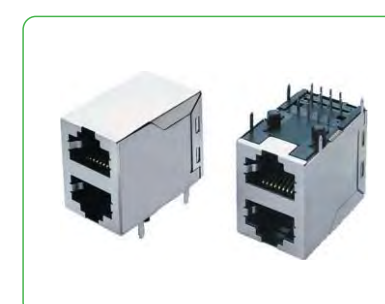
THY-339CWNL



THY-201DNL



THY-2546QNL



THY-2013NL



THY-007DWWUSBNL



THY-009USBGY8NL



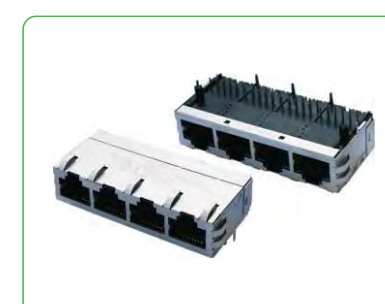
THY-1001USB2NL



THY-415WWNL



THY-401QWNL



THY-2513NL

不带滤波器产品 Product without filter



THY-52224P4CNL



THY-52224P4CENL



THY-52226P6CENL



THY-52228P8CENL



THY-5224GYNL



THY-5224NL



THY-5224S8P8CYG-ENL



THY-5224SM8P8CNL



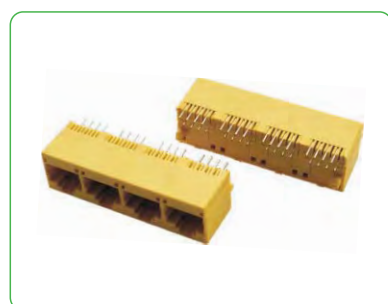
THY-5224SNL



THY-5224S12ENL



THY-5224S14NL



THY-52248P8CWK14NL

不带滤波器产品 Product without filter



THY-52288P8CNL



THY-53214P4CNL



THY-53216P6CNL



THY-53218P8CNL



THY-55216P6CNL



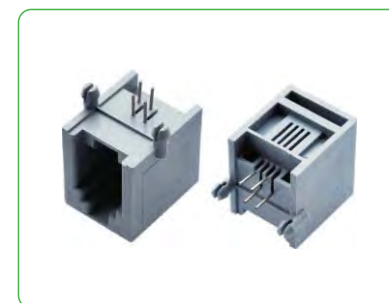
THY-55218P8CENL



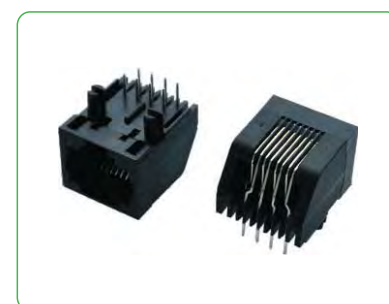
THY-55218P8CNL



THY-5521S6P6C12NL



THY-55234P4CNL



THY-57228P8CNL



THY-56S8P8C11NL



THY-56S8P8C11YGENL

不带滤波器产品 Product without filter



THY-56S8P8C11YGNL



THY-56S8P8C12YGENL



THY-56S8P8C14WDNL



THY-56S8P8C14YGENL



THY-56S8P8C16YGNL



THY-56S8P8C18YGENL



THY-5621S6P6CNL



THY-5621S10P8CQNL



THY-5921S457NL



THY-5921SQ305NL



THY-5921S11NL

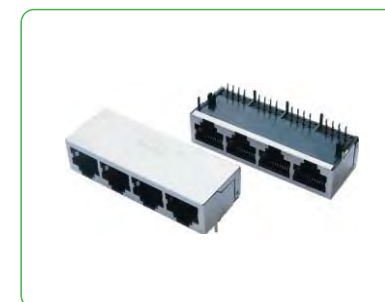


THY-5921S12NL

不带滤波器产品 Product without filter



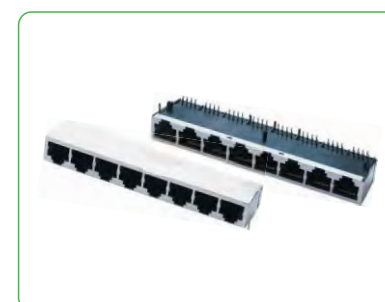
THY-5921S14HNL



THY-5921S14F457NL



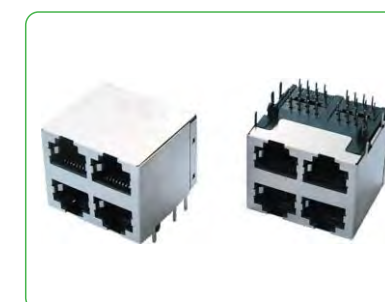
THY-5921S8P8C15NL



THY-5921S8P8C18NL



THY-5921S8P8C21ENL



THY-5921S22NL



THY-5921S24NL



THY-5921S24YGENL



THY-US030-005E



THY-US030-015E



THY-USB02NL



THY-USB2YGWTNL

特殊产品系列 Particular product



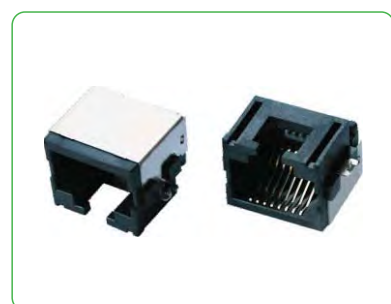
THY-006YGZETNL



THY-60S8P8C11YGNL



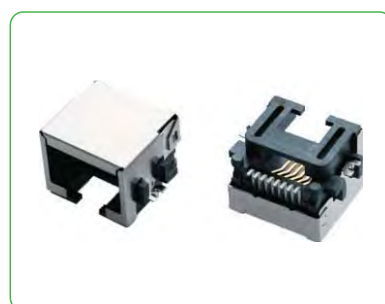
THY-60S8P8C11NL



THY-72A75MMNL



THY-55A-55MMNL



THY-82A86MMNL



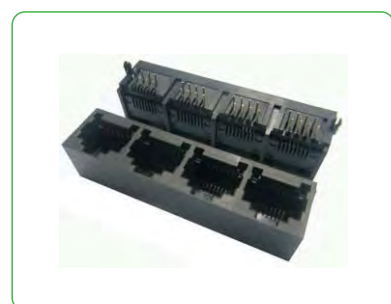
THY-008021NL



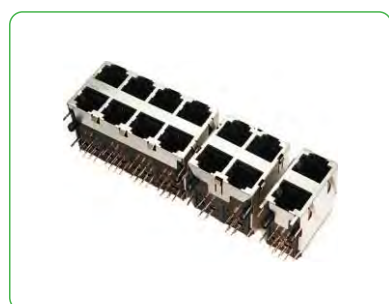
THY-88-BX11-RVSL



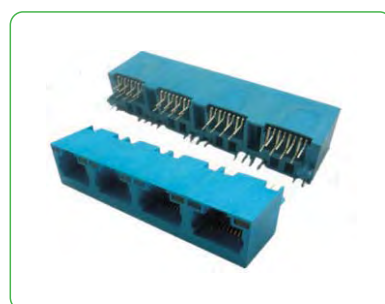
THY-88-BX11-RVSL1



THY-55F8814S



THY-59B6P DUAL LAYER



RJ45 TOP ENTRY DIP WITH LED

特殊产品系列 Particular product



成型式直插式带ledRJ45JACK



焊板式8P8C支架



贴片电话网络座



斜45度DIP LED 网络母座



直立式SMT电话网络母座



RJ45 JACK TO PLUG AND DC JACK



HDB15M(三排PIN) TO RJ45 JACK副本



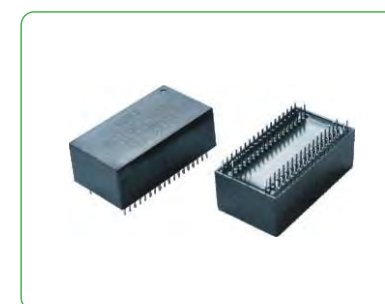
RJ45 JACK 648 8P8C



THY-1102NL



THY-5007NL



THY-7201DRNL



THY-56B08E

特殊产品系列 Particular product



THY-56B0814E



THY-572264YE



THY-572266S



THY-59A66B



THY-52SMT (4P 6P 8P)



THY-56TT805



THY-52T88B01



THY-52T88B02



THY-52F88



THY-52F88B1



THY-PL008



THY-PL009E

ROHS

积极响应世界各国环保指令

向世界提供绿色产品

Respond to the international community environmental
protection instruction actively

provide the green product toward the word